

## Product datasheet for **TA809352S**

### **PITPNB Mouse Monoclonal Antibody [Clone ID: OTI5B10]**

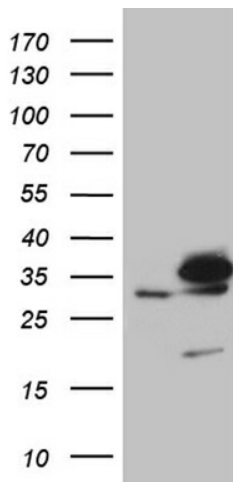
#### **Product data:**

Product Type:	Primary Antibodies
Clone Name:	OTI5B10
Applications:	IHC, WB
Recommended Dilution:	WB 1:500~2000, IHC 1:2000
Reactivity:	Human, Mouse, Rat
Host:	Mouse
Isotype:	IgG2b
Clonality:	Monoclonal
Immunogen:	Full length human recombinant protein of human PITPNB(NP_036531) produced in E.coli.
Formulation:	PBS (pH 7.3) containing 1% BSA, 50% glycerol and 0.02% sodium azide.
Concentration:	1 mg/ml
Purification:	Purified from mouse ascites fluids or tissue culture supernatant by affinity chromatography (protein A/G)
Conjugation:	Unconjugated
Storage:	Store at -20°C as received.
Stability:	Stable for 12 months from date of receipt.
Predicted Protein Size:	31.4 kDa
Gene Name:	phosphatidylinositol transfer protein beta
Database Link:	<a href="#">NP_036531</a> <a href="#">Entrez Gene 56305 Mouse</a> <a href="#">Entrez Gene 114561 Rat</a> <a href="#">Entrez Gene 23760 Human</a> <a href="#">P48739</a>
Background:	This gene encodes a cytoplasmic protein that catalyzes the transfer of phosphatidylinositol and phosphatidylcholine between membranes. This transfer activity is required for COPI complex-mediated retrograde transport from the Golgi apparatus to the endoplasmic reticulum. Alternative splicing of this gene results in multiple transcript variants. [provided by RefSeq, Sep 2013]
Synonyms:	PI-TP-beta; PtdInsTP; VIB1B

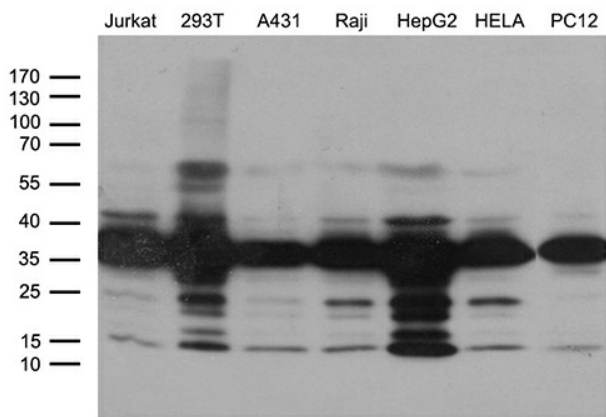


[View online »](#)

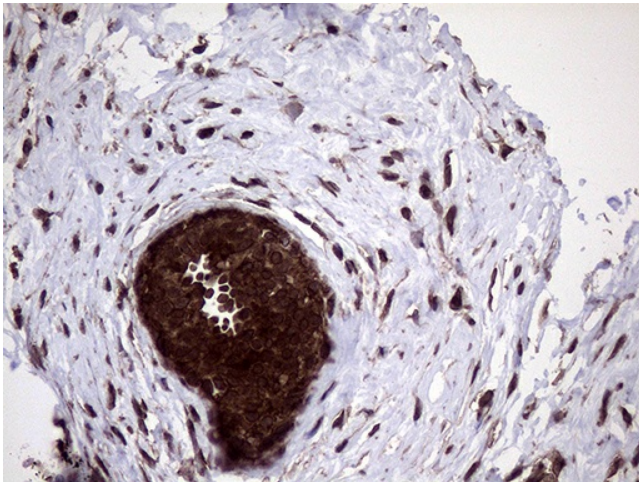
**Product images:**



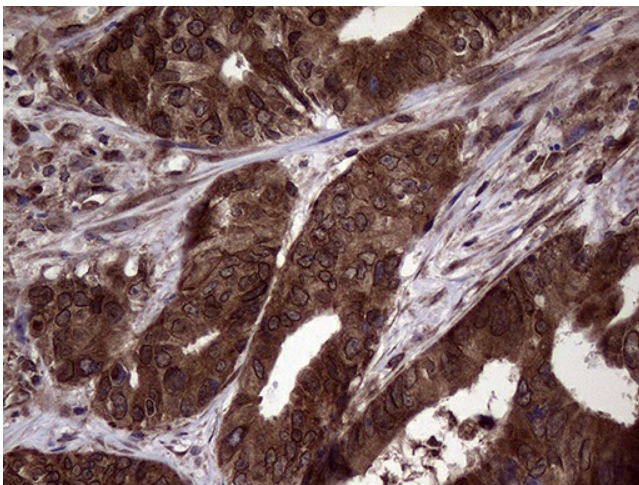
HEK293T cells were transfected with the pCMV6-ENTRY control (Left lane) or pCMV6-ENTRY PITPNB ([RC204262], Right lane) cDNA for 48 hrs and lysed. Equivalent amounts of cell lysates (5 ug per lane) were separated by SDS-PAGE and immunoblotted with anti-PITPNB (1:2000). Positive lysates [LY415778] (100ug) and [LC415778] (20ug) can be purchased separately from OriGene.



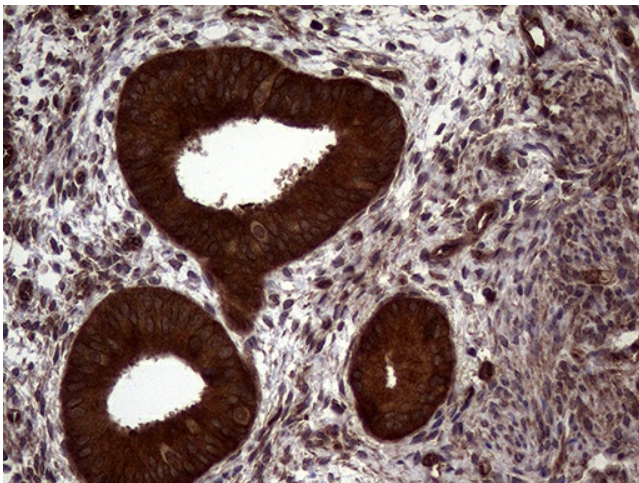
Western blot analysis of extracts (35ug) from 7 different cell lines by using anti-PITPNB monoclonal antibody (1:500).



Immunohistochemical staining of paraffin-embedded Human breast tissue within the normal limits using anti-PITPNB mouse monoclonal antibody. (Heat-induced epitope retrieval by 1mM EDTA in 10mM Tris buffer (pH8.5) at 120°C for 3min, [TA809352]) (1:2000)



Immunohistochemical staining of paraffin-embedded Adenocarcinoma of Human colon tissue using anti-PITPNB mouse monoclonal antibody. (Heat-induced epitope retrieval by 1mM EDTA in 10mM Tris buffer (pH8.5) at 120°C for 3min, [TA809352]) (1:2000)



Immunohistochemical staining of paraffin-embedded Human endometrium tissue within the normal limits using anti-PITPNB mouse monoclonal antibody. (Heat-induced epitope retrieval by 1mM EDTA in 10mM Tris buffer (pH8.5) at 120°C for 3min, [TA809352]) (1:2000)