

Product datasheet for **TA809347M**

CRSP8 (MED27) Mouse Monoclonal Antibody [Clone ID: OTI2A4]

Product data:

| | |
|-------------------------|--|
| Product Type: | Primary Antibodies |
| Clone Name: | OTI2A4 |
| Applications: | WB |
| Recommended Dilution: | WB 1:500~2000 |
| Reactivity: | Human, Mouse, Rat |
| Host: | Mouse |
| Isotype: | IgG1 |
| Clonality: | Monoclonal |
| Immunogen: | Human recombinant protein fragment corresponding to amino acids 24-247 of human MED27(NP_004260) produced in E.coli. |
| Formulation: | PBS (pH 7.3) containing 1% BSA, 50% glycerol and 0.02% sodium azide. |
| Concentration: | 1 mg/ml |
| Purification: | Purified from mouse ascites fluids or tissue culture supernatant by affinity chromatography (protein A/G) |
| Conjugation: | Unconjugated |
| Storage: | Store at -20°C as received. |
| Stability: | Stable for 12 months from date of receipt. |
| Predicted Protein Size: | 35.3 kDa |
| Gene Name: | mediator complex subunit 27 |
| Database Link: | NP_004260 Entrez Gene 68975 Mouse Entrez Gene 296612 Rat Entrez Gene 9442 Human Q6P2C8 |



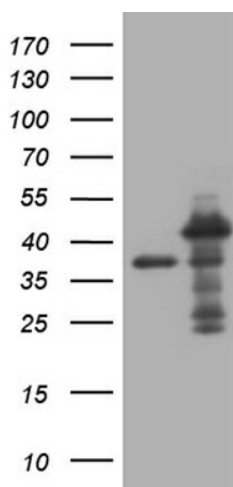
[View online »](#)

Background:

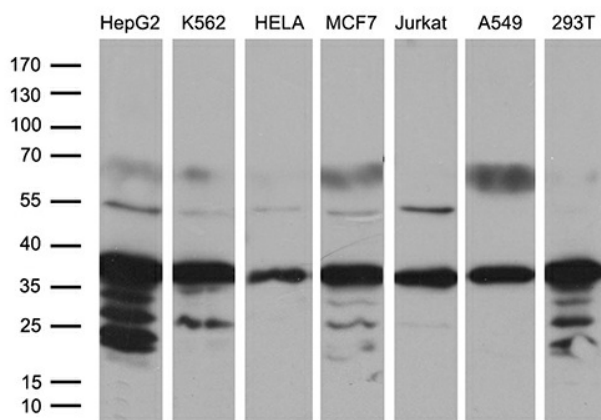
The activation of gene transcription is a multistep process that is triggered by factors that recognize transcriptional enhancer sites in DNA. These factors work with co-activators to direct transcriptional initiation by the RNA polymerase II apparatus. The protein encoded by this gene is a subunit of the CRSP (cofactor required for SP1 activation) complex, which, along with TFIID, is required for efficient activation by SP1. This protein is also a component of other multisubunit complexes e.g. thyroid hormone receptor-(TR-) associated proteins which interact with TR and facilitate TR function on DNA templates in conjunction with initiation factors and cofactors. Alternatively spliced transcript variants encoding multiple isoforms have been observed for this gene, and a pseudogene of this gene is located on the long arm of chromosome 5. [provided by RefSeq, Dec 2011]

Synonyms:

CRAP34; CRSP8; CRSP34; MED3; NEDSCAC; TRAP37

Product images:


HEK293T cells were transfected with the pCMV6-ENTRY control (Cat# [PS100001], Left lane) or pCMV6-ENTRY MED27 (Cat# [RC209398], Right lane) cDNA for 48 hrs and lysed. Equivalent amounts of cell lysates (5 ug per lane) were separated by SDS-PAGE and immunoblotted with anti-MED27 (Cat# [TA809347])(1:2000). Positive lysates [LY418056] (100ug) and [LC418056] (20ug) can be purchased separately from OriGene.



Western blot analysis of extracts (35ug) from 7 different cell lines by using anti-MED27 monoclonal antibody (1:500).