

Product datasheet for **TA809341AM**

Repulsive Guidance Molecule C (HFE2) Mouse Monoclonal Antibody (Biotin conjugated) [Clone ID: OTI8F4]

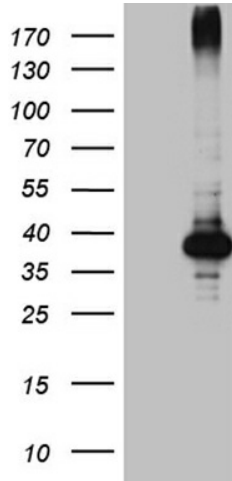
Product data:

Product Type:	Primary Antibodies
Clone Name:	OTI8F4
Applications:	WB
Recommended Dilution:	WB 1:2000
Reactivity:	Human
Host:	Mouse
Isotype:	IgG2b
Clonality:	Monoclonal
Immunogen:	Human recombinant protein fragment corresponding to amino acids 36-263 of human HFE2(NP_998818) produced in E.coli.
Formulation:	PBS (pH 7.3) containing 1% BSA, 50% glycerol and 0.02% sodium azide.
Concentration:	0.5 mg/ml
Purification:	Purified from mouse ascites fluids or tissue culture supernatant by affinity chromatography (protein A/G)
Conjugation:	Biotin
Storage:	Store at -20°C as received.
Stability:	Stable for 12 months from date of receipt.
Gene Name:	hemochromatosis type 2 (juvenile)
Database Link:	NP_998818 Entrez Gene 148738 Human Q6ZVN8
Synonyms:	HFE2A; HJV; JH; RGMC
Protein Families:	Transmembrane



[View online »](#)

Product images:



HEK293T cells were transfected with the pCMV6-ENTRY control (Cat# [PS100001], Left lane) or pCMV6-ENTRY HFE2 (Cat# [RC220228], Right lane) cDNA for 48 hrs and lysed. Equivalent amounts of cell lysates (5 ug per lane) were separated by SDS-PAGE and immunoblotted with anti-HFE2 (Cat# [TA809341])(1:2000).