

Product datasheet for **TA809336BM**

FCRLB Mouse Monoclonal Antibody (HRP conjugated) [Clone ID: OTI6H8]

Product data:

Product Type:	Primary Antibodies
Clone Name:	OTI6H8
Applications:	WB
Recommended Dilution:	WB 1:2000
Reactivity:	Human, Rat
Host:	Mouse
Isotype:	IgG2b
Clonality:	Monoclonal
Immunogen:	Human recombinant protein fragment corresponding to amino acids 202-426 of human FCRLB(NP_001002901) produced in E.coli.
Formulation:	PBS (pH 7.3) containing 1% BSA, 50% glycerol.
Concentration:	0.5 mg/ml
Purification:	Purified from mouse ascites fluids or tissue culture supernatant by affinity chromatography (protein A/G)
Conjugation:	HRP
Storage:	Store at -20°C as received.
Stability:	Stable for 12 months from date of receipt.
Predicted Protein Size:	46.7 kDa
Gene Name:	Fc receptor like B
Database Link:	NP_001002901 Entrez Gene 127943 Human Q6BAA4



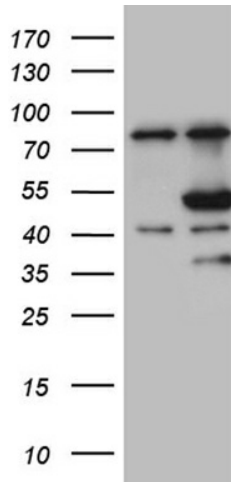
[View online »](#)

Background:

FCRL2 belongs to the Fc receptor family. Fc receptors are involved in phagocytosis, antibody-dependent cell cytotoxicity, immediate hypersensitivity, and transcytosis of immunoglobulins via their ability to bind immunoglobulin (Ig) constant regions (Chikaev et al., 2005 [PubMed 15676285]). [supplied by OMIM, Mar 2008]. Transcript Variant: This variant (1, also known as hFCRL2a) represents the longest transcript and encodes the longest isoform (1). ##Evidence-Data-START## Transcript exon combination :: DQ021957.1 [ECO:0000332] ##Evidence-Data-END##

Synonyms:

FCRL2; FCRLM2; FCRLY; FcRY; FREB-2

Product images:

HEK293T cells were transfected with the pCMV6-ENTRY control (Left lane) or pCMV6-ENTRY FCRLB ([RC217211], Right lane) cDNA for 48 hrs and lysed. Equivalent amounts of cell lysates (5 ug per lane) were separated by SDS-PAGE and immunoblotted with anti-FCRLB (1:2000). Positive lysates [LY400392] (100ug) and [LC400392] (20ug) can be purchased separately from OriGene.