

Product datasheet for **TA809320S**

GEF H1 (ARHGEF2) Mouse Monoclonal Antibody [Clone ID: OTI5F2]

Product data:

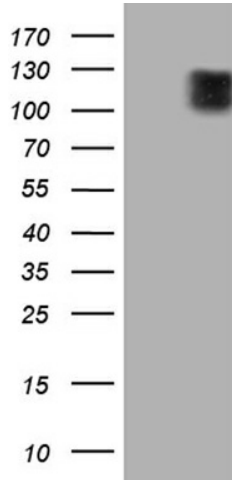
Product Type:	Primary Antibodies
Clone Name:	OTI5F2
Applications:	FC, WB
Recommended Dilution:	WB 1:2000
Reactivity:	Human, Mouse, Rat
Host:	Mouse
Isotype:	IgG1
Clonality:	Monoclonal
Immunogen:	Full length human recombinant protein of human ARHGEF2 (NP_004714) produced in HEK293T cell.
Formulation:	PBS (pH 7.3) containing 1% BSA, 50% glycerol and 0.02% sodium azide.
Concentration:	1 mg/ml
Purification:	Purified from mouse ascites fluids or tissue culture supernatant by affinity chromatography (protein A/G)
Conjugation:	Unconjugated
Storage:	Store at -20°C as received.
Stability:	Stable for 12 months from date of receipt.
Predicted Protein Size:	108.1 kDa
Gene Name:	Rho/Rac guanine nucleotide exchange factor 2
Database Link:	NP_004714 Entrez Gene 16800 Mouse Entrez Gene 310635 Rat Entrez Gene 9181 Human Q92974
Background:	Rho GTPases play a fundamental role in numerous cellular processes that are initiated by extracellular stimuli that work through G protein coupled receptors. The encoded protein may form complex with G proteins and stimulate rho-dependent signals. Alternatively spliced transcript variants encoding different isoforms have been identified. [provided by RefSeq, Jun 2009]



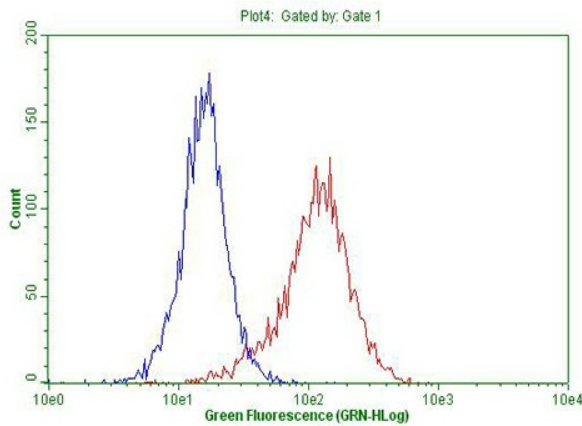
[View online »](#)

Synonyms: GEF; GEF-H1; GEFH1; LFP40; P40
Protein Families: Druggable Genome
Protein Pathways: Pathogenic Escherichia coli infection

Product images:



HEK293T cells were transfected with the pCMV6-ENTRY control (Cat# [PS100001], Left lane) or pCMV6-ENTRY ARHGEF2 (Cat# [RC204546], Right lane) cDNA for 48 hrs and lysed. Equivalent amounts of cell lysates (5 ug per lane) were separated by SDS-PAGE and immunoblotted with anti-ARHGEF2 (Cat# [TA809320])(1:2000). Positive lysates [LY417793] (100ug) and [LC417793] (20ug) can be purchased separately from OriGene.



Flow cytometric Analysis of permeabilized Hela cells, using anti-ARHGEF2 antibody ([TA809320]), (Red), compared to negative control (PBS), (Blue) (1:100).