

Product datasheet for **TA809289S**

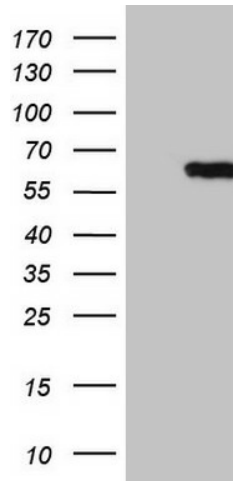
CEP63 Mouse Monoclonal Antibody [Clone ID: OTI2H2]

Product data:

Product Type:	Primary Antibodies
Clone Name:	OTI2H2
Applications:	WB
Recommended Dilution:	WB 1:2000
Reactivity:	Human
Host:	Mouse
Isotype:	IgG1
Clonality:	Monoclonal
Immunogen:	Full length human recombinant protein of human CEP63(NP_001035859) produced in E.coli.
Formulation:	PBS (pH 7.3) containing 1% BSA, 50% glycerol and 0.02% sodium azide.
Concentration:	1 mg/ml
Purification:	Purified from mouse ascites fluids or tissue culture supernatant by affinity chromatography (protein A/G)
Conjugation:	Unconjugated
Storage:	Store at -20°C as received.
Stability:	Stable for 12 months from date of receipt.
Gene Name:	centrosomal protein 63
Database Link:	NP_001035859 Entrez Gene 80254 Human Q96MT8
Background:	This gene encodes a protein with six coiled-coil domains. The protein is localized to the centrosome, a non-membraneous organelle that functions as the major microtubule-organizing center in animal cells. Several alternatively spliced transcript variants have been found, but their biological validity has not been determined. [provided by RefSeq, Jul 2008]
Synonyms:	SCKL6



[View online »](#)

Product images:

HEK293T cells were transfected with the pCMV6-ENTRY control (Left lane) or pCMV6-ENTRY CEP63 ([RC209633], Right lane) cDNA for 48 hrs and lysed. Equivalent amounts of cell lysates (5 ug per lane) were separated by SDS-PAGE and immunoblotted with anti-CEP63 (1:2000). Positive lysates [LY420878] (100ug) and [LC420878] (20ug) can be purchased separately from OriGene.