

## Product datasheet for **TA809285AM**

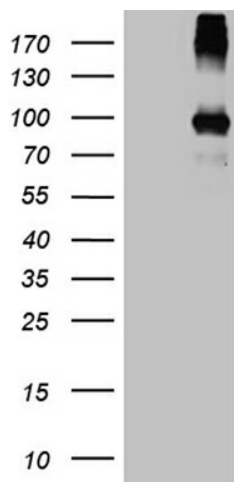
### **PAMR1 Mouse Monoclonal Antibody (Biotin conjugated) [Clone ID: OTI4E2]**

#### **Product data:**

Product Type:	Primary Antibodies
Clone Name:	OTI4E2
Applications:	WB
Recommended Dilution:	WB 1:500
Reactivity:	Human, Mouse, Rat
Host:	Mouse
Isotype:	IgG2b
Clonality:	Monoclonal
Immunogen:	Human recombinant protein fragment corresponding to amino acids 338-559 of human PAMR1(NP_056245) produced in E.coli.
Formulation:	PBS (pH 7.3) containing 1% BSA, 50% glycerol and 0.02% sodium azide.
Concentration:	0.5 mg/ml
Purification:	Purified from mouse ascites fluids or tissue culture supernatant by affinity chromatography (protein A/G)
Conjugation:	Biotin
Storage:	Store at -20°C as received.
Stability:	Stable for 12 months from date of receipt.
Gene Name:	peptidase domain containing associated with muscle regeneration 1
Database Link:	<a href="#">NP_056245</a> <a href="#">Entrez Gene 25891 Human</a> <a href="#">Q6UXH9</a>
Synonyms:	DKFZP586H2123; FP938; RAMP
Protein Families:	Druggable Genome, Protease



[View online »](#)

**Product images:**

HEK293T cells were transfected with the pCMV6-ENTRY control (Cat# [PS100001], Left lane) or pCMV6-ENTRY PAMR1 (Cat# [RC224357], Right lane) cDNA for 48 hrs and lysed. Equivalent amounts of cell lysates (5 ug per lane) were separated by SDS-PAGE and immunoblotted with anti-PAMR1 (Cat# [TA809285])(1:500).