

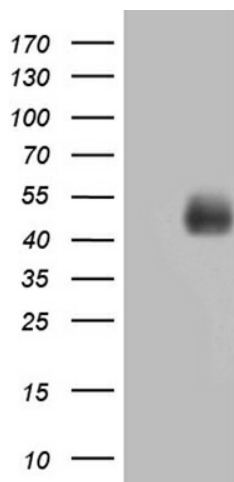
## Product datasheet for **TA809279M**

### **MFGE8 Mouse Monoclonal Antibody [Clone ID: OTI7A4]**

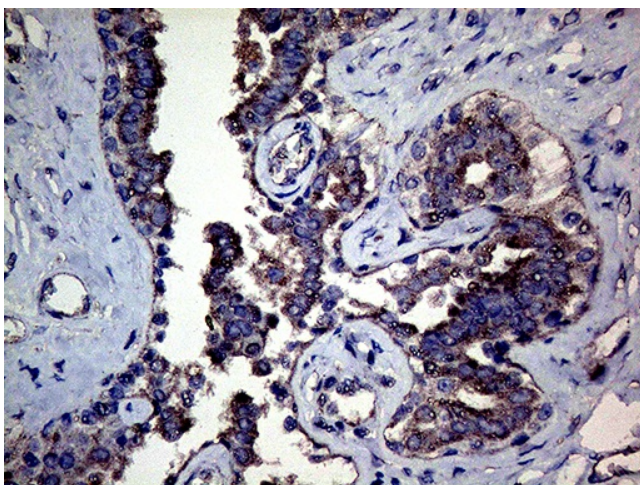
#### **Product data:**

Product Type:	Primary Antibodies
Clone Name:	OTI7A4
Applications:	IHC, WB
Recommended Dilution:	WB 1:2000, IHC 1:500
Reactivity:	Human
Host:	Mouse
Isotype:	IgG1
Clonality:	Monoclonal
Immunogen:	Full length human recombinant protein of human MFGE8 (NP_005919) produced in HEK293T cell.
Formulation:	PBS (pH 7.3) containing 1% BSA, 50% glycerol and 0.02% sodium azide.
Concentration:	1 mg/ml
Purification:	Purified from mouse ascites fluids or tissue culture supernatant by affinity chromatography (protein A/G)
Conjugation:	Unconjugated
Storage:	Store at -20°C as received.
Stability:	Stable for 12 months from date of receipt.
Predicted Protein Size:	42.9 kDa
Gene Name:	milk fat globule-EGF factor 8 protein
Database Link:	<a href="#">NP_005919</a> <a href="#">Entrez Gene 4240 Human</a> <a href="#">Q08431</a>
Synonyms:	BA46; EDIL1; HMFG; hP47; HsT19888; MFG-E8; MFGM; OAcGD3S; SED1; SPAG10

[View online »](#)

**Product images:**


HEK293T cells were transfected with the pCMV6-ENTRY control (Cat# [PS100001], Left lane) or pCMV6-ENTRY MFGE8 (Cat# [RC217163], Right lane) cDNA for 48 hrs and lysed. Equivalent amounts of cell lysates (5 ug per lane) were separated by SDS-PAGE and immunoblotted with anti-MFGE8 (Cat# [TA809279])(1:2000). Positive lysates [LY401796] (100ug) and [LC401796] (20ug) can be purchased separately from OriGene.



Immunohistochemical staining of paraffin-embedded Human breast tissue within the normal limits using anti-MFGE8 mouse monoclonal antibody. Heat-induced epitope retrieval by EDTA solution buffer pH 8.0 at 120°C for 3 min.