

## Product datasheet for **TA809276S**

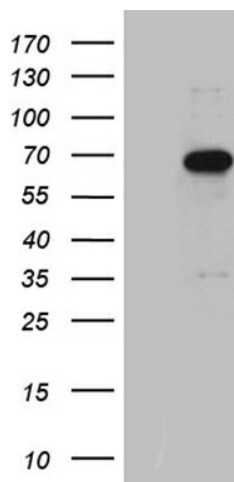
### CEP63 Mouse Monoclonal Antibody [Clone ID: OT11C7]

#### Product data:

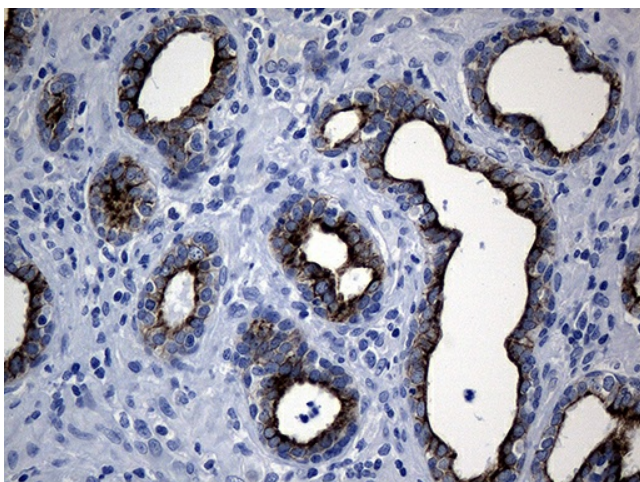
Product Type:	Primary Antibodies
Clone Name:	OT11C7
Applications:	IHC, WB
Recommended Dilution:	WB 1:2000, IHC 1:500
Reactivity:	Human
Host:	Mouse
Isotype:	IgG1
Clonality:	Monoclonal
Immunogen:	Full length human recombinant protein of human CEP63 (NP_001035859) produced in E.coli.
Formulation:	PBS (pH 7.3) containing 1% BSA, 50% glycerol and 0.02% sodium azide.
Concentration:	1 mg/ml
Purification:	Purified from mouse ascites fluids or tissue culture supernatant by affinity chromatography (protein A/G)
Conjugation:	Unconjugated
Storage:	Store at -20°C as received.
Stability:	Stable for 12 months from date of receipt.
Predicted Protein Size:	62.8 kDa
Gene Name:	centrosomal protein 63
Database Link:	<a href="#">NP_001035859</a> <a href="#">Entrez Gene 80254 Human</a> <a href="#">Q96MT8</a>
Synonyms:	SCKL6



[View online »](#)

**Product images:**

HEK293T cells were transfected with the pCMV6-ENTRY control (Left lane) or pCMV6-ENTRY CEP63 ([RC209633], Right lane) cDNA for 48 hrs and lysed. Equivalent amounts of cell lysates (5 ug per lane) were separated by SDS-PAGE and immunoblotted with anti-CEP63 (1:2000). Positive lysates [LY420878] (100ug) and [LC420878] (20ug) can be purchased separately from OriGene.



Immunohistochemical staining of paraffin-embedded Carcinoma of Human prostate tissue using anti-CEP63 mouse monoclonal antibody. (Heat-induced epitope retrieval by 1mM EDTA in 10mM Tris buffer (pH8.5) at 120°C for 3min, [TA809276]) (1:500)