

Product datasheet for **TA809273M**

BLZF1 Mouse Monoclonal Antibody [Clone ID: OTI3E2]

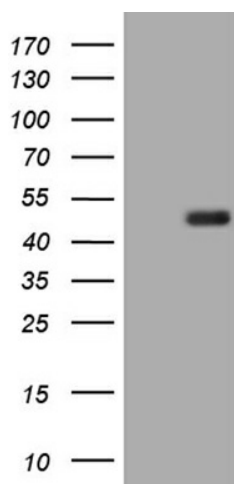
Product data:

Product Type:	Primary Antibodies
Clone Name:	OTI3E2
Applications:	WB
Recommended Dilution:	WB 1:2000
Reactivity:	Human
Host:	Mouse
Isotype:	IgG1
Clonality:	Monoclonal
Immunogen:	Human recombinant protein fragment corresponding to amino acids 1-246 of human BLZF1(NP_003657) produced in E.coli.
Formulation:	PBS (pH 7.3) containing 1% BSA, 50% glycerol and 0.02% sodium azide.
Concentration:	1 mg/ml
Purification:	Purified from mouse ascites fluids or tissue culture supernatant by affinity chromatography (protein A/G)
Conjugation:	Unconjugated
Storage:	Store at -20°C as received.
Stability:	Stable for 12 months from date of receipt.
Predicted Protein Size:	44.7 kDa
Gene Name:	basic leucine zipper nuclear factor 1
Database Link:	NP_003657 Entrez Gene 8548 Human Q9H2G9
Background:	Interacts with GORASP2 and with the GTP-bound form of RAB2, but not with other Golgi Rab proteins. GORASP2 and BLZF1 form a RAB2 effector complex on medial Golgi. [UniProtKB/Swiss-Prot Function]
Synonyms:	GOLGIN-45; JEM-1; JEM-1s; JEM1
Protein Families:	Transcription Factors



[View online »](#)

Product images:



HEK293T cells were transfected with the pCMV6-ENTRY control (Left lane) or pCMV6-ENTRY BLZF1 ([RC204706], Right lane) cDNA for 48 hrs and lysed. Equivalent amounts of cell lysates (5 ug per lane) were separated by SDS-PAGE and immunoblotted with anti-BLZF1 (1:2000). Positive lysates [LY418515] (100ug) and [LC418515] (20ug) can be purchased separately from OriGene.