

## Product datasheet for **TA809263M**

### ARHGAP12 Mouse Monoclonal Antibody [Clone ID: OTI4A3]

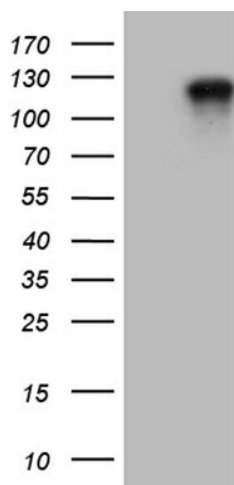
#### Product data:

Product Type:	Primary Antibodies
Clone Name:	OTI4A3
Applications:	WB
Recommended Dilution:	WB 1:2000
Reactivity:	Human, Mouse, Rat
Host:	Mouse
Isotype:	IgG1
Clonality:	Monoclonal
Immunogen:	Human recombinant protein fragment corresponding to amino acids 286-452 of human ARHGAP12 (NP_060757) produced in E.coli.
Formulation:	PBS (pH 7.3) containing 1% BSA, 50% glycerol and 0.02% sodium azide.
Concentration:	1 mg/ml
Purification:	Purified from mouse ascites fluids or tissue culture supernatant by affinity chromatography (protein A/G)
Conjugation:	Unconjugated
Storage:	Store at -20°C as received.
Stability:	Stable for 12 months from date of receipt.
Predicted Protein Size:	96.1 kDa
Gene Name:	Rho GTPase activating protein 12
Database Link:	<a href="#">NP_060757</a> <a href="#">Entrez Gene 75415 Mouse</a> <a href="#">Entrez Gene 307016 Rat</a> <a href="#">Entrez Gene 94134 Human</a> <a href="#">Q8IWW6</a>
Background:	This gene encodes a member of a large family of proteins that activate Rho-type guanosine triphosphate (GTP) metabolizing enzymes. The encoded protein may be involved in suppressing tumor formation by regulating cell invasion and adhesion. Alternatively spliced transcript variants encoding multiple isoforms have been observed for this gene. [provided by RefSeq, Jul 2012]


[View online »](#)

**Synonyms:** DKFZp779N2050; FLJ10971; FLJ20737; FLJ21785; FLJ45709

**Product images:**



HEK293T cells were transfected with the pCMV6-ENTRY control (Cat# [PS100001], Left lane) or pCMV6-ENTRY ARHGAP12 (Cat# [RC215343], Right lane) cDNA for 48 hrs and lysed. Equivalent amounts of cell lysates (5 ug per lane) were separated by SDS-PAGE and immunoblotted with anti-ARHGAP12 (Cat# [TA809263])(1:2000). Positive lysates [LY413135] (100ug) and [LC413135] (20ug) can be purchased separately from OriGene.