

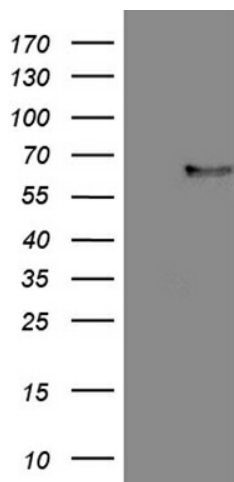
Product datasheet for **TA809252M**

FCRLB Mouse Monoclonal Antibody [Clone ID: OTI1D7]

Product data:

Product Type:	Primary Antibodies
Clone Name:	OTI1D7
Applications:	WB
Recommended Dilution:	WB 1:2000
Reactivity:	Human, Rat
Host:	Mouse
Isotype:	IgG1
Clonality:	Monoclonal
Immunogen:	Human recombinant protein fragment corresponding to amino acids 202-426 of human FCRLB(NP_001002901) produced in E.coli.
Formulation:	PBS (pH 7.3) containing 1% BSA, 50% glycerol and 0.02% sodium azide.
Concentration:	1 mg/ml
Purification:	Purified from mouse ascites fluids or tissue culture supernatant by affinity chromatography (protein A/G)
Conjugation:	Unconjugated
Storage:	Store at -20°C as received.
Stability:	Stable for 12 months from date of receipt.
Gene Name:	Fc receptor like B
Database Link:	NP_001002901 Entrez Gene 127943 Human Q6BAA4
Background:	FCRL2 belongs to the Fc receptor family. Fc receptors are involved in phagocytosis, antibody-dependent cell cytotoxicity, immediate hypersensitivity, and transcytosis of immunoglobulins via their ability to bind immunoglobulin (Ig) constant regions (Chikaev et al., 2005 [PubMed 15676285]). [supplied by OMIM, Mar 2008]
Synonyms:	FCRL2; FCRLM2; FCRLY; FcRY; FReB-2


[View online »](#)

Product images:


HEK293T cells were transfected with the pCMV6-ENTRY control (Left lane) or pCMV6-ENTRY FCRLB ([RC217211], Right lane) cDNA for 48 hrs and lysed. Equivalent amounts of cell lysates (5 ug per lane) were separated by SDS-PAGE and immunoblotted with anti-FCRLB (1:2000). Positive lysates [LY400392] (100ug) and [LC400392] (20ug) can be purchased separately from OriGene.