

## Product datasheet for **TA809240AM**

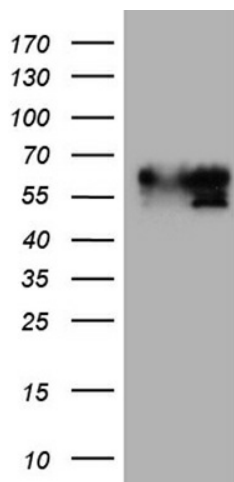
### **BNIPL Mouse Monoclonal Antibody (Biotin conjugated) [Clone ID: OTI2E8]**

#### **Product data:**

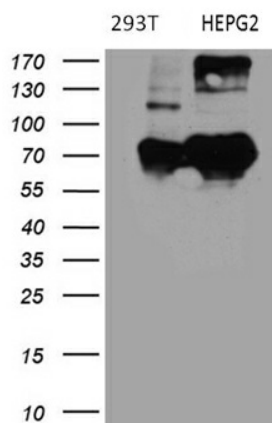
Product Type:	Primary Antibodies
Clone Name:	OTI2E8
Applications:	WB
Recommended Dilution:	WB 1:500~2000
Reactivity:	Human, Mouse, Rat
Host:	Mouse
Isotype:	IgG1
Clonality:	Monoclonal
Immunogen:	Human recombinant protein fragment corresponding to amino acids 1-203 of human BNIPL(NP_612122) produced in E.coli.
Formulation:	PBS (pH 7.3) containing 1% BSA, 50% glycerol and 0.02% sodium azide.
Concentration:	0.5 mg/ml
Purification:	Purified from mouse ascites fluids or tissue culture supernatant by affinity chromatography (protein A/G)
Conjugation:	Biotin
Storage:	Store at -20°C as received.
Stability:	Stable for 12 months from date of receipt.
Predicted Protein Size:	39.5 kDa
Gene Name:	BCL2/adenovirus E1B 19kD interacting protein like
Database Link:	<a href="#">NP_612122</a> <a href="#">Entrez Gene 171388 Mouse</a> <a href="#">Entrez Gene 361994 Rat</a> <a href="#">Entrez Gene 149428 Human</a> <a href="#">Q7Z465</a>
Background:	The protein encoded by this gene interacts with several other proteins, such as BCL2, ARHGAP1, MIF and GFER. It may function as a bridge molecule between BCL2 and ARHGAP1/CDC42 in promoting cell death. Alternatively spliced transcript variants encoding different isoforms have been described for this gene. [provided by RefSeq, Aug 2011]
Synonyms:	BNIP-S; BNIP-Salpha; BNIP-Sbeta; BNIPL-1; BNIPL-2; BNIPL1; BNIPL2; BNIPS; PP753


[View online »](#)

## Product images:



HEK293T cells were transfected with the pCMV6-ENTRY control (Left lane) or pCMV6-ENTRY BNIPL ([RC206811], Right lane) cDNA for 48 hrs and lysed. Equivalent amounts of cell lysates (5 ug per lane) were separated by SDS-PAGE and immunoblotted with anti-BNIPL (1:2000). Positive lysates [LY408738] (100ug) and [LC408738] (20ug) can be purchased separately from OriGene.



Western blot analysis of extracts (35ug) from 2 different cell lines by using anti-BNIPL monoclonal antibody (HepG2: human; 293T: human) (1:500).