

## Product datasheet for **TA809230S**

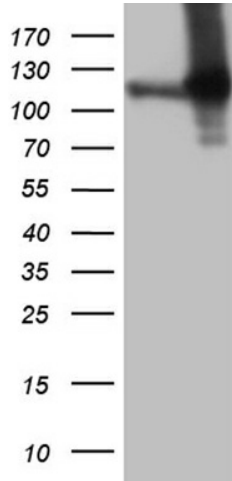
### **RIAM (APBB1IP) Mouse Monoclonal Antibody [Clone ID: OTI6E3]**

#### **Product data:**

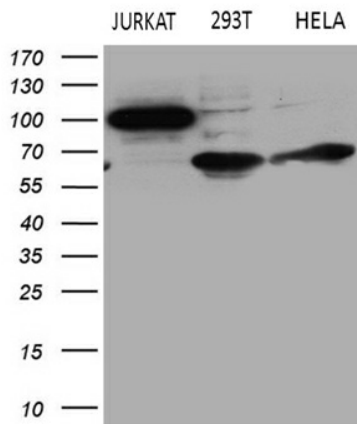
Product Type:	Primary Antibodies
Clone Name:	OTI6E3
Applications:	IHC, WB
Recommended Dilution:	WB 1:500~2000, IHC 1:250
Reactivity:	Human
Host:	Mouse
Isotype:	IgG1
Clonality:	Monoclonal
Immunogen:	Full length human recombinant protein of human APBB1IP (NP_061916) produced in HEK293T cell.
Formulation:	PBS (pH 7.3) containing 1% BSA, 50% glycerol and 0.02% sodium azide.
Concentration:	1 mg/ml
Purification:	Purified from mouse ascites fluids or tissue culture supernatant by affinity chromatography (protein A/G)
Conjugation:	Unconjugated
Storage:	Store at -20°C as received.
Stability:	Stable for 12 months from date of receipt.
Predicted Protein Size:	73 kDa
Gene Name:	amyloid beta precursor protein binding family B member 1 interacting protein
Database Link:	<a href="#">NP_061916</a> <a href="#">Entrez Gene 54518 Human</a> <a href="#">Q7Z5R6</a>
Synonyms:	INAG1; PREL1; RARP1; RIAM



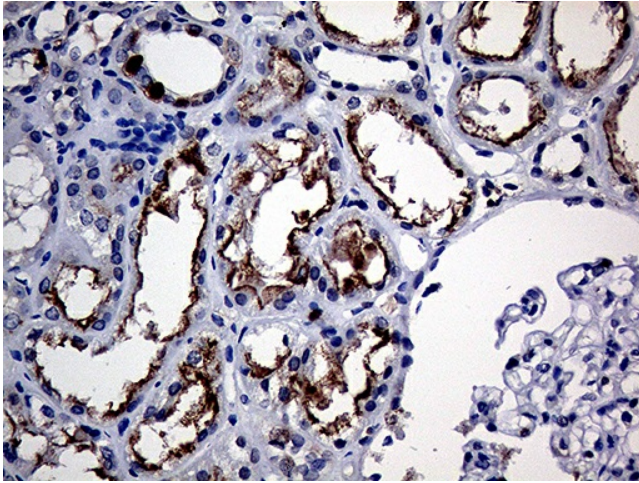
[View online »](#)

**Product images:**


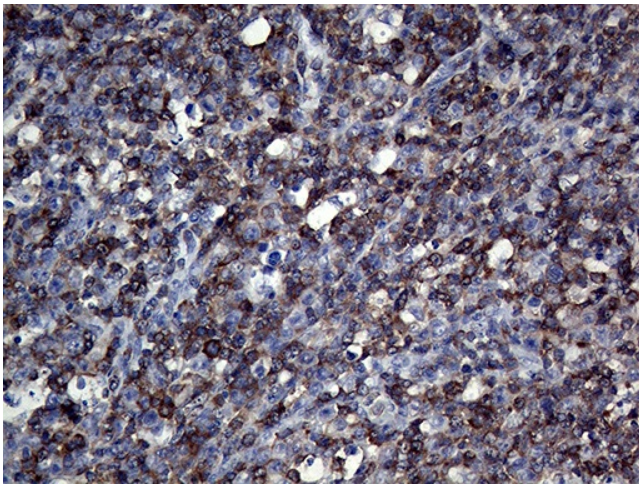
HEK293T cells were transfected with the pCMV6-ENTRY control (Cat# [PS100001], Left lane) or pCMV6-ENTRY APBB1IP (Cat# [RC208712], Right lane) cDNA for 48 hrs and lysed. Equivalent amounts of cell lysates (5 ug per lane) were separated by SDS-PAGE and immunoblotted with anti-APBB1IP (Cat# [TA809230])(1:2000). Positive lysates [LY412750] (100ug) and [LC412750] (20ug) can be purchased separately from OriGene.



Western blot analysis of extracts (35ug) from 3 different cell lines by using anti-APBB1IP monoclonal antibody (1:500).



Immunohistochemical staining of paraffin-embedded Human Kidney tissue within the normal limits using anti-APBB1IP mouse monoclonal antibody. (Heat-induced epitope retrieval by 1mM EDTA in 10mM Tris buffer (pH8.5) at 120°C for 3min, [TA809230]) (1:250)



Immunohistochemical staining of paraffin-embedded Human Lymph node tissue within the normal limits using anti-APBB1IP mouse monoclonal antibody. (Heat-induced epitope retrieval by 1mM EDTA in 10mM Tris buffer (pH8.5) at 120°C for 3min, [TA809230]) (1:500) (1:250)