

Product datasheet for **TA809219**

GATA3 Mouse Monoclonal Antibody [Clone ID: OTI10G7]

Product data:

Product Type:	Primary Antibodies
Clone Name:	OTI10G7
Applications:	IF, IHC, WB
Recommended Dilution:	WB 1:2000, IHC 1:150
Reactivity:	Human, Mouse, Rat
Host:	Mouse
Isotype:	IgG2b
Clonality:	Monoclonal
Immunogen:	Human recombinant protein fragment corresponding to amino acids 155-443 of human GATA3 (NP_002042) produced in E.coli.
Formulation:	PBS (pH 7.3) containing 1% BSA, 50% glycerol and 0.02% sodium azide.
Concentration:	1 mg/ml
Purification:	Purified from mouse ascites fluids or tissue culture supernatant by affinity chromatography (protein A/G)
Conjugation:	Unconjugated
Storage:	Store at -20°C as received.
Stability:	Stable for 12 months from date of receipt.
Predicted Protein Size:	47.9 kDa
Gene Name:	GATA binding protein 3
Database Link:	NP_001002295 Entrez Gene 14462 Mouse Entrez Gene 85471 Rat Entrez Gene 2625 Human P23771
Background:	This gene encodes a protein which belongs to the GATA family of transcription factors. The protein contains two GATA-type zinc fingers and is an important regulator of T-cell development and plays an important role in endothelial cell biology. Defects in this gene are the cause of hypoparathyroidism with sensorineural deafness and renal dysplasia. [provided by RefSeq, Nov 2009]

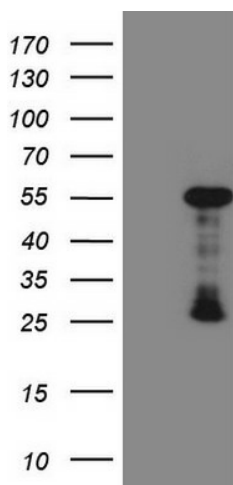


[View online »](#)

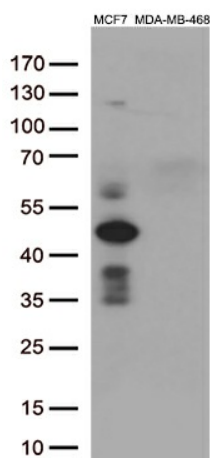
Synonyms: HDR; HDRS

Protein Families: Adult stem cells, ES Cell Differentiation/IPS, Stem cell relevant signaling - JAK/STAT signaling pathway, Transcription Factors

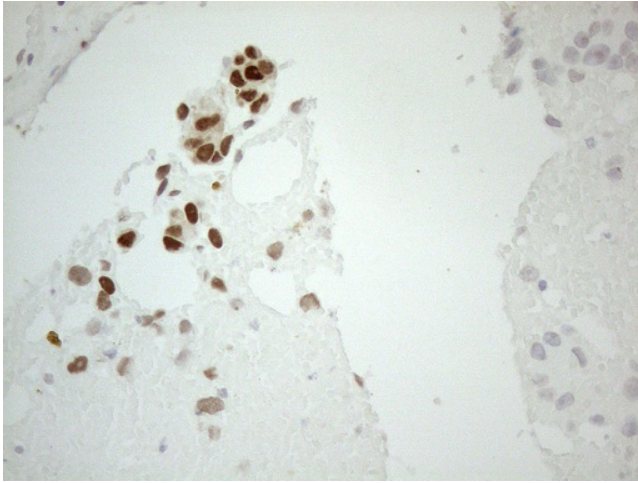
Product images:



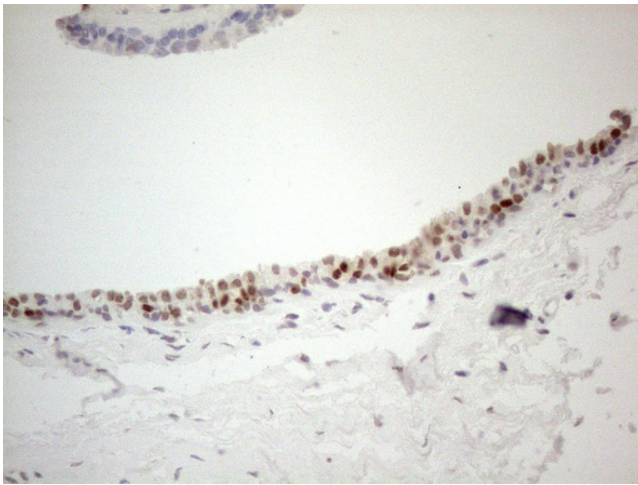
HEK293T cells were transfected with the pCMV6-ENTRY control (Left lane) or pCMV6-ENTRY GATA3 ([RC211904], Right lane) cDNA for 48 hrs and lysed. Equivalent amounts of cell lysates (5 ug per lane) were separated by SDS-PAGE and immunoblotted with anti-GATA3 (1:2000). Positive lysates [LY424146] (100ug) and [LC424146] (20ug) can be purchased separately from OriGene.



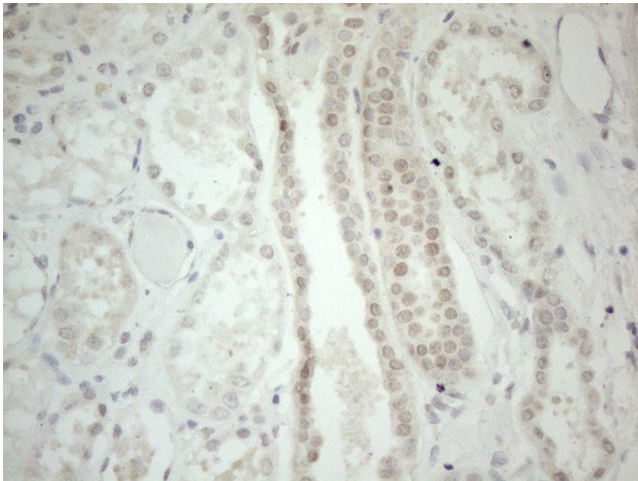
Western blot analysis of extracts (35ug) from 2 different cell by using anti-GATA3 monoclonal antibody (1:500).



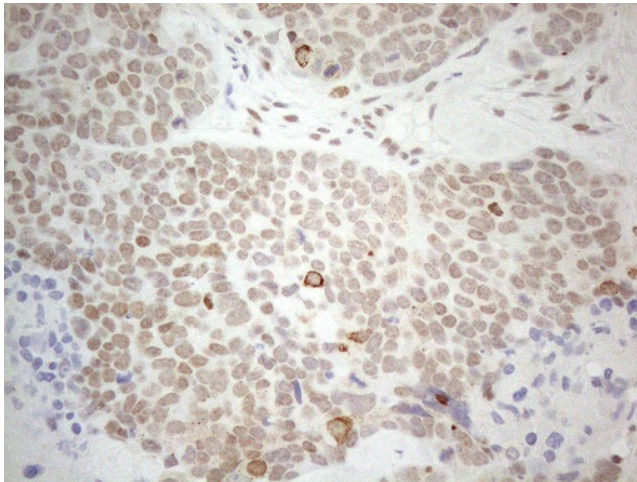
Immunohistochemical staining of paraffin-embedded Adenocarcinoma of Human breast tissue using anti-GATA3 mouse monoclonal antibody. Heat-induced epitope retrieval by EDTA solution buffer pH 8.0 at 120°C for 3 min.



Immunohistochemical staining of paraffin-embedded Adenocarcinoma of Human colon tissue using anti-GATA3 mouse monoclonal antibody. Heat-induced epitope retrieval by EDTA solution buffer pH 8.0 at 120°C for 3 min.



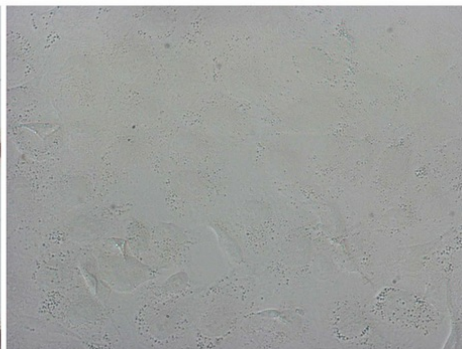
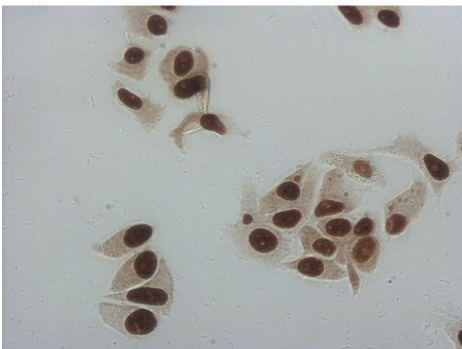
Immunohistochemical staining of paraffin-embedded Human Kidney tissue using anti-GATA3 mouse monoclonal antibody. Heat-induced epitope retrieval by EDTA solution buffer pH 8.0 at 120°C for 3 min.



Immunohistochemical staining of paraffin-embedded Human prostate tissue using anti-GATA3 mouse monoclonal antibody. Heat-induced epitope retrieval by EDTA solution buffer pH 8.0 at 120°C for 3 min.

MCF7

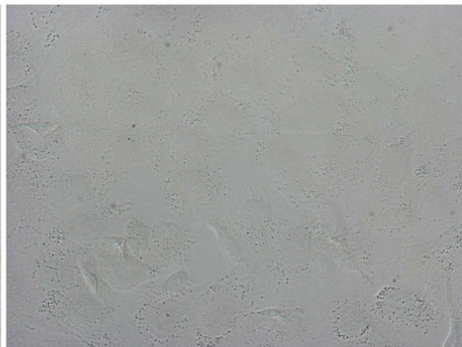
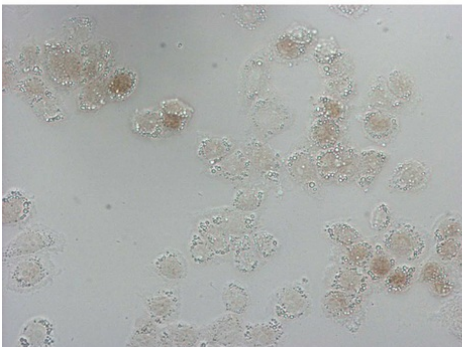
HUVEC



Immunocytochemistry staining of MCF-7 cells using anti-GATA3 mouse monoclonal antibody (TA809219) (Left). The right is negative control (1:5000).

MDA-MB-468

HUVEC



Immunocytochemistry staining of MDA-MB-468 cells using anti-GATA3 mouse monoclonal antibody (TA809219) (Left). The right is negative control (1:5000).