

## Product datasheet for **TA809213BM**

### **CLEC1 (CLEC1A) Mouse Monoclonal Antibody (HRP conjugated) [Clone ID: OTI1H8]**

#### **Product data:**

Product Type:	Primary Antibodies
Clone Name:	OTI1H8
Applications:	WB
Recommended Dilution:	WB 1:2000
Reactivity:	Human
Host:	Mouse
Isotype:	IgG2b
Clonality:	Monoclonal
Immunogen:	Full length human recombinant protein of human CLEC1A (NP_057595) produced in HEK293T cell.
Formulation:	PBS (pH 7.3) containing 1% BSA, 50% glycerol.
Concentration:	0.5 mg/ml
Purification:	Purified from mouse ascites fluids or tissue culture supernatant by affinity chromatography (protein A/G)
Conjugation:	HRP
Storage:	Store at -20°C as received.
Stability:	Stable for 12 months from date of receipt.
Predicted Protein Size:	31.8 kDa
Gene Name:	C-type lectin domain family 1 member A
Database Link:	<a href="#">NP_057595</a> <a href="#">Entrez Gene 51267 Human</a> <a href="#">Q8NC01</a>



[View online »](#)

**Background:**

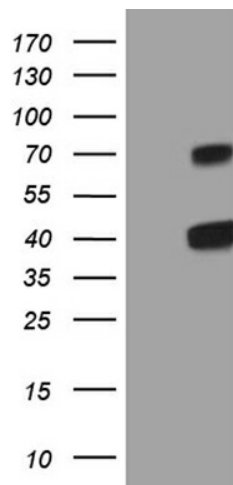
This gene encodes a member of the C-type lectin/C-type lectin-like domain (CTL/CTLD) superfamily. Members of this family share a common protein fold and have diverse functions, such as cell adhesion, cell-cell signaling, glycoprotein turnover, and roles in inflammation and immune response. The encoded protein may play a role in regulating dendritic cell function. This gene is closely linked to other CTL/CTLD superfamily members on chromosome 12p13 in the natural killer gene complex region. Alternative splicing results in multiple transcript variants. [provided by RefSeq, Jul 2014]

**Synonyms:**

CLEC-1; CLEC1

**Protein Families:**

Druggable Genome, Transmembrane

**Product images:**

HEK293T cells were transfected with the pCMV6-ENTRY control (Cat# [PS100001], Left lane) or pCMV6-ENTRY CLEC1A (Cat# [RC209709], Right lane) cDNA for 48 hrs and lysed. Equivalent amounts of cell lysates (5 ug per lane) were separated by SDS-PAGE and immunoblotted with anti-CLEC1A (Cat# [TA809213])(1:2000). Positive lysates [LY413948] (100ug) and [LC413948] (20ug) can be purchased separately from OriGene.