

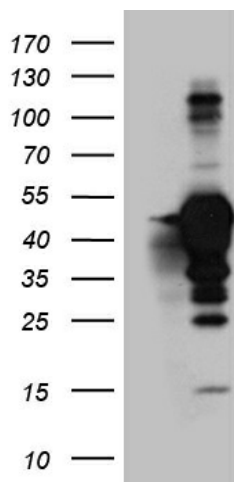
Product datasheet for **TA809208M**

MAGEB4 Mouse Monoclonal Antibody [Clone ID: OTI2H5]

Product data:

Product Type:	Primary Antibodies
Clone Name:	OTI2H5
Applications:	WB
Recommended Dilution:	WB 1:2000
Reactivity:	Human
Host:	Mouse
Isotype:	IgG1
Clonality:	Monoclonal
Immunogen:	Human recombinant protein fragment corresponding to amino acids 1-193 of human MAGEB4(NP_002358) produced in E.coli.
Formulation:	PBS (pH 7.3) containing 1% BSA, 50% glycerol and 0.02% sodium azide.
Concentration:	1 mg/ml
Purification:	Purified from mouse ascites fluids or tissue culture supernatant by affinity chromatography (protein A/G)
Conjugation:	Unconjugated
Storage:	Store at -20°C as received.
Stability:	Stable for 12 months from date of receipt.
Predicted Protein Size:	38.7 kDa
Gene Name:	MAGE family member B4
Database Link:	NP_002358 Entrez Gene 4115 Human O15481
Synonyms:	CT3.6

[View online »](#)

Product images:


HEK293T cells were transfected with the pCMV6-ENTRY control (Left lane) or pCMV6-ENTRY MAGEB4 [RC206060], Right lane) cDNA for 48 hrs and lysed. Equivalent amounts of cell lysates (5 ug per lane) were separated by SDS-PAGE and immunoblotted with anti-MAGEB4 (1:2000). Positive lysates [LY419379] (100ug) and [LC419379] (20ug) can be purchased separately from OriGene.