

## Product datasheet for **TA809208BM**

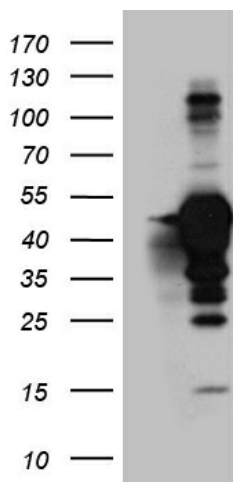
### **MAGEB4 Mouse Monoclonal Antibody (HRP conjugated) [Clone ID: OTI2H5]**

#### **Product data:**

Product Type:	Primary Antibodies
Clone Name:	OTI2H5
Applications:	WB
Recommended Dilution:	WB 1:2000
Reactivity:	Human
Host:	Mouse
Isotype:	IgG1
Clonality:	Monoclonal
Immunogen:	Human recombinant protein fragment corresponding to amino acids 1-193 of human MAGEB4(NP_002358) produced in E.coli.
Formulation:	PBS (pH 7.3) containing 1% BSA, 50% glycerol.
Concentration:	0.5 mg/ml
Purification:	Purified from mouse ascites fluids or tissue culture supernatant by affinity chromatography (protein A/G)
Conjugation:	HRP
Storage:	Store at -20°C as received.
Stability:	Stable for 12 months from date of receipt.
Predicted Protein Size:	38.7 kDa
Gene Name:	MAGE family member B4
Database Link:	<a href="#">NP_002358</a> <a href="#">Entrez Gene 4115 Human</a> <a href="#">O15481</a>
Synonyms:	CT3.6



[View online »](#)

**Product images:**

HEK293T cells were transfected with the pCMV6-ENTRY control (Left lane) or pCMV6-ENTRY MAGEB4 [RC206060], Right lane) cDNA for 48 hrs and lysed. Equivalent amounts of cell lysates (5 ug per lane) were separated by SDS-PAGE and immunoblotted with anti-MAGEB4 (1:2000). Positive lysates [LY419379] (100ug) and [LC419379] (20ug) can be purchased separately from OriGene.