

Product datasheet for **TA809187AM**

Transglutaminase 2 (TGM2) Mouse Monoclonal Antibody (Biotin conjugated) [Clone ID: OTI2F9]

Product data:

Product Type:	Primary Antibodies
Clone Name:	OTI2F9
Applications:	IHC, WB
Recommended Dilution:	WB 1:500, IHC 1:500
Reactivity:	Human
Host:	Mouse
Isotype:	IgG1
Clonality:	Monoclonal
Immunogen:	Full length human recombinant protein of human TGM2 (NP_004604) produced in HEK293T cell.
Formulation:	PBS (pH 7.3) containing 1% BSA, 50% glycerol and 0.02% sodium azide.
Concentration:	0.5 mg/ml
Purification:	Purified from mouse ascites fluids or tissue culture supernatant by affinity chromatography (protein A/G)
Conjugation:	Biotin
Storage:	Store at -20°C as received.
Stability:	Stable for 12 months from date of receipt.
Predicted Protein Size:	77.1 kDa
Gene Name:	transglutaminase 2
Database Link:	NP_004604 Entrez Gene 7052 Human P21980



[View online »](#)

Background:

Transglutaminases are enzymes that catalyze the crosslinking of proteins by epsilon-gamma glutamyl lysine isopeptide bonds. While the primary structure of transglutaminases is not conserved, they all have the same amino acid sequence at their active sites and their activity is calcium-dependent. The protein encoded by this gene acts as a monomer, is induced by retinoic acid, and appears to be involved in apoptosis. Finally, the encoded protein is the autoantigen implicated in celiac disease. Two transcript variants encoding different isoforms have been found for this gene. [provided by RefSeq, Jul 2008]

Synonyms:

G-ALPHA-h; GNAH; HEL-S-45; TG2; TGC

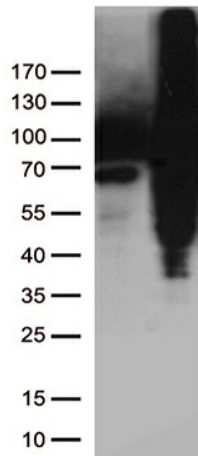
Protein Families:

Druggable Genome

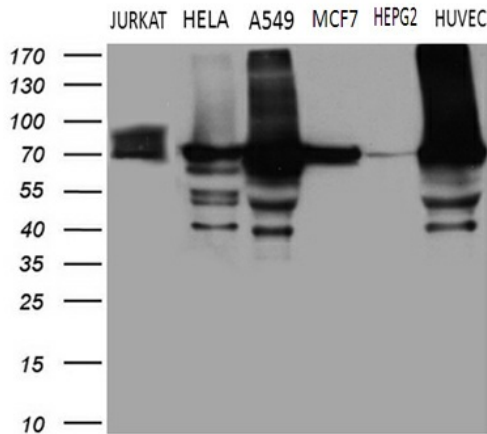
Protein Pathways:

Huntington's disease

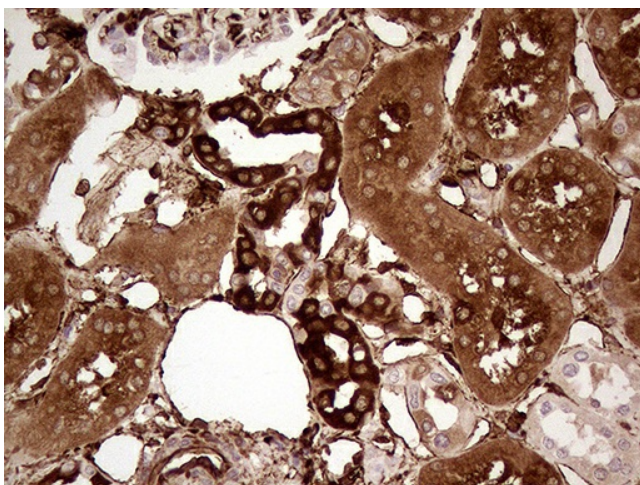
Product images:



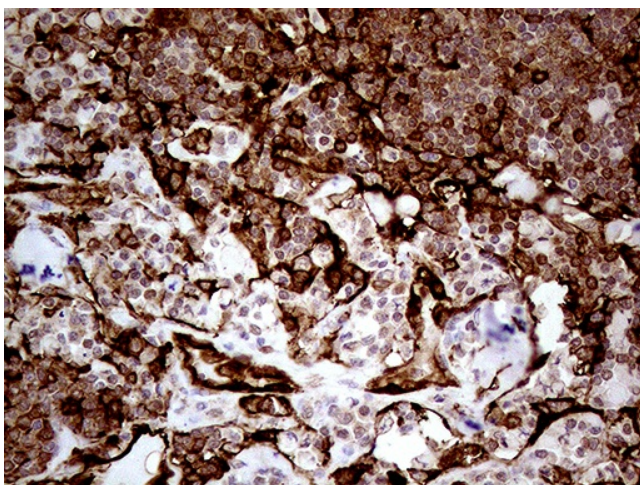
HEK293T cells were transfected with the pCMV6-ENTRY control (Left lane) or pCMV6-ENTRY TGM2 ([RC217353], Right lane) cDNA for 48 hrs and lysed. Equivalent amounts of cell lysates (5 ug per lane) were separated by SDS-PAGE and immunoblotted with anti-TGM2. Positive lysates [LY401458] (100ug) and [LC401458] (20ug) can be purchased separately from OriGene.



Western blot analysis of extracts (35ug) from 6 different cell lines by using anti-TGM2 monoclonal antibody (1:500).



Immunohistochemical staining of paraffin-embedded Human Kidney tissue within the normal limits using anti-TGM2 mouse monoclonal antibody. (Heat-induced epitope retrieval by 1mM EDTA in 10mM Tris buffer (pH8.5) at 120°C for 3min, [TA809187]) (1:500)



Immunohistochemical staining of paraffin-embedded Human lymphoma tissue using anti-TGM2 mouse monoclonal antibody. (Heat-induced epitope retrieval by 1mM EDTA in 10mM Tris buffer (pH8.5) at 120°C for 3min, [TA809187]) (1:500)