

Product datasheet for **TA809183**

Nestin (NES) Mouse Monoclonal Antibody [Clone ID: OTI3B12]

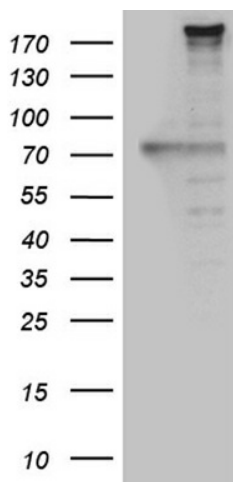
Product data:

Product Type:	Primary Antibodies
Clone Name:	OTI3B12
Applications:	IHC, WB
Recommended Dilution:	WB 1:500, IHC 1:2000
Reactivity:	Human
Host:	Mouse
Isotype:	IgG1
Clonality:	Monoclonal
Immunogen:	Human recombinant protein fragment corresponding to amino acids 99-349 of human NES (NP_006608) produced in E.Coli.
Formulation:	PBS (pH 7.3) containing 1% BSA, 50% glycerol and 0.02% sodium azide.
Concentration:	1 mg/ml
Purification:	Purified from mouse ascites fluids or tissue culture supernatant by affinity chromatography (protein A/G)
Conjugation:	Unconjugated
Storage:	Store at -20°C as received.
Stability:	Stable for 12 months from date of receipt.
Gene Name:	nestin
Database Link:	NP_006608 Entrez Gene 10763 Human P48681
Synonyms:	Nbla00170
Protein Families:	ES Cell Differentiation/IPS

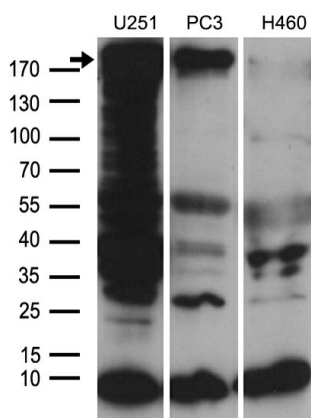


[View online »](#)

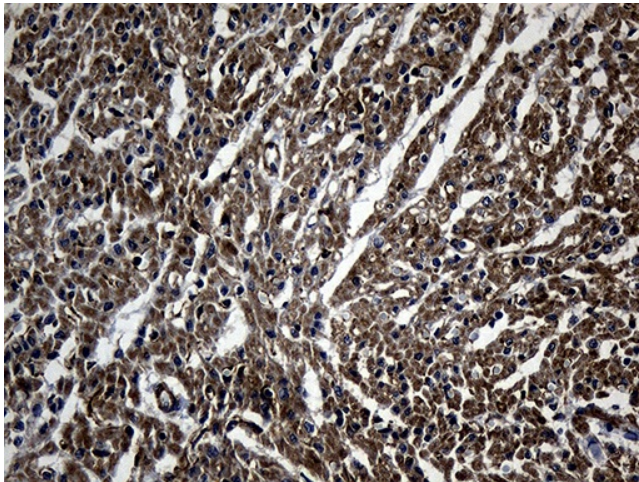
Product images:



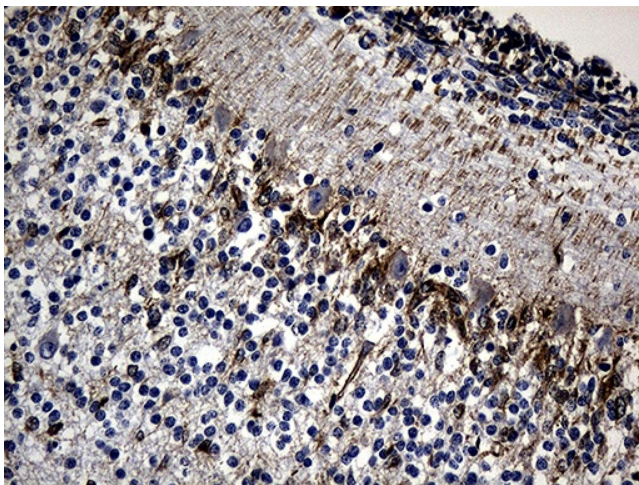
HEK293T cells were transfected with the pCMV6-ENTRY control (Left lane) or pCMV6-ENTRY NES ([RC218197], Right lane) cDNA for 48 hrs and lysed. Equivalent amounts of cell lysates (5 ug per lane) were separated by SDS-PAGE and immunoblotted with anti-NES (1:500).



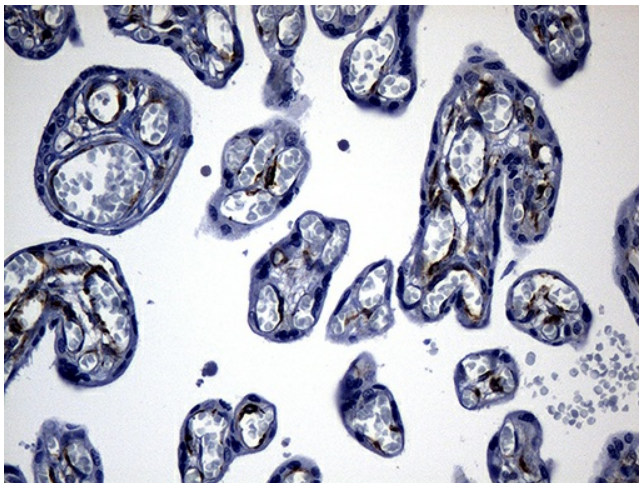
Western blot analysis of extracts (35ug) from 3 different cell lines by using anti-NES monoclonal antibody (1:500).



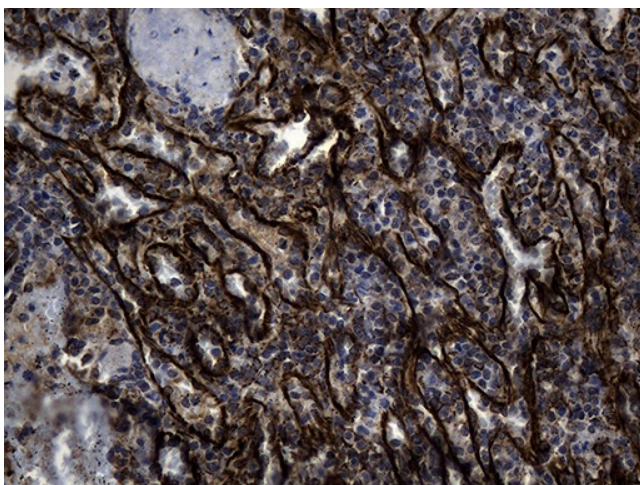
Immunohistochemical staining of paraffin-embedded Human adult heart tissue within the normal limits using anti-NES mouse monoclonal antibody. (Heat-induced epitope retrieval by 1mM EDTA in 10mM Tris buffer (pH8.5) at 120°C for 3min, TA809183) (1:2000)



Immunohistochemical staining of paraffin-embedded Human embryonic cerebellum within the normal limits using anti-NES mouse monoclonal antibody. (Heat-induced epitope retrieval by 1mM EDTA in 10mM Tris buffer (pH8.5) at 120°C for 3min, TA809183) (1:2000)



Immunohistochemical staining of paraffin-embedded Human placenta tissue within the normal limits using anti-NES mouse monoclonal antibody. (Heat-induced epitope retrieval by 1mM EDTA in 10mM Tris buffer (pH8.5) at 120°C for 3min, TA809183) (1:2000)



Immunohistochemical staining of paraffin-embedded Human spleen tissue within the normal limits using anti-NES mouse monoclonal antibody. (Heat-induced epitope retrieval by 1mM EDTA in 10mM Tris buffer (pH8.5) at 120°C for 3min, TA809183) (1:2000)