

## Product datasheet for **TA809182AM**

### **C20orf7 (NDUFAF5) Mouse Monoclonal Antibody (Biotin conjugated) [Clone ID: OTI6A9]**

#### **Product data:**

|                         |   |
|-------------------------|---|
| Product Type:           | Primary Antibodies  |
| Clone Name:             | OTI6A9  |
| Applications:           | IHC, WB   |
| Recommended Dilution:   | WB 1:2000, IHC 1:2000   |
| Reactivity:             | Human   |
| Host:                   | Mouse   |
| Isotype:                | IgG2b   |
| Clonality:              | Monoclonal  |
| Immunogen:              | Full length human recombinant protein of human NDUFAF5 (NP_077025) produced in HEK293T cell.              |
| Formulation:            | PBS (pH 7.3) containing 1% BSA, 50% glycerol and 0.02% sodium azide.                                      |
| Concentration:          | 0.5 mg/ml   |
| Purification:           | Purified from mouse ascites fluids or tissue culture supernatant by affinity chromatography (protein A/G) |
| Conjugation:            | Biotin  |
| Storage:                | Store at -20°C as received.   |
| Stability:              | Stable for 12 months from date of receipt.  |
| Predicted Protein Size: | 38.7 kDa  |
| Gene Name:              | NADH:ubiquinone oxidoreductase complex assembly factor 5  |
| Database Link:          | <a href="#">NP_077025</a><br><a href="#">Entrez Gene 79133 Human</a><br><a href="#">Q5TEU4</a>            |



[View online »](#)

**Background:**

The NADH-ubiquinone oxidoreductase complex (complex I) of the mitochondrial respiratory chain catalyzes the transfer of electrons from NADH to ubiquinone, and consists of at least 43 subunits. The complex is located in the inner mitochondrial membrane. This gene encodes a mitochondrial protein that is associated with the matrix face of the mitochondrial inner membrane and is required for complex I assembly. A mutation in this gene results in mitochondrial complex I deficiency. Multiple transcript variants encoding different isoforms have been found for this gene. [provided by RefSeq, Oct 2009]

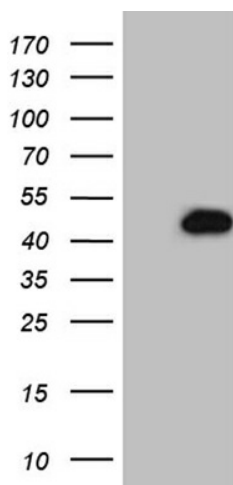
**Synonyms:**

bA526K24.2; C20orf7; dJ842G6.1

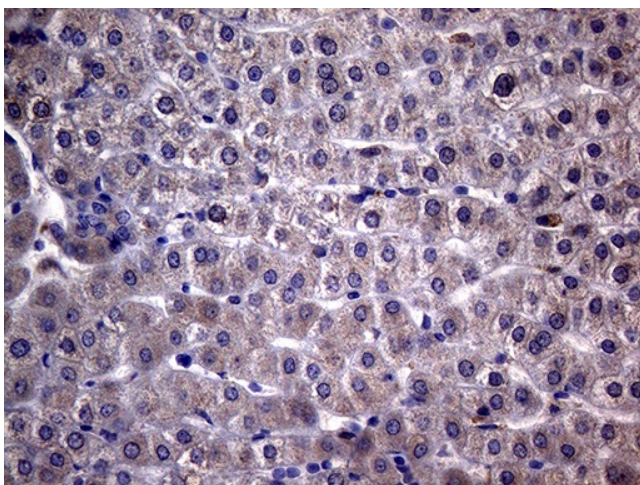
**Protein Families:**

Druggable Genome

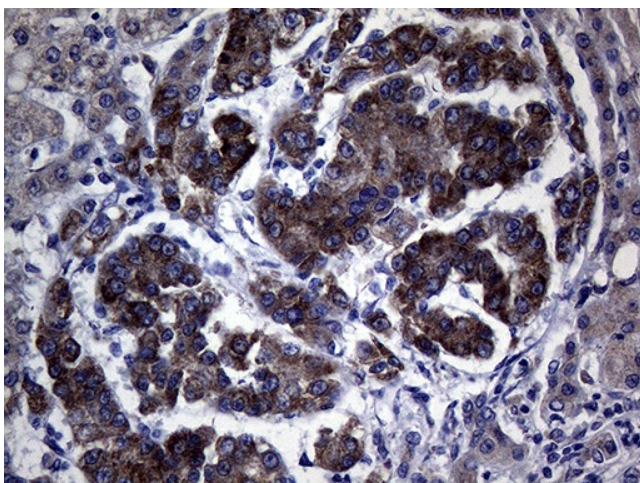
**Product images:**



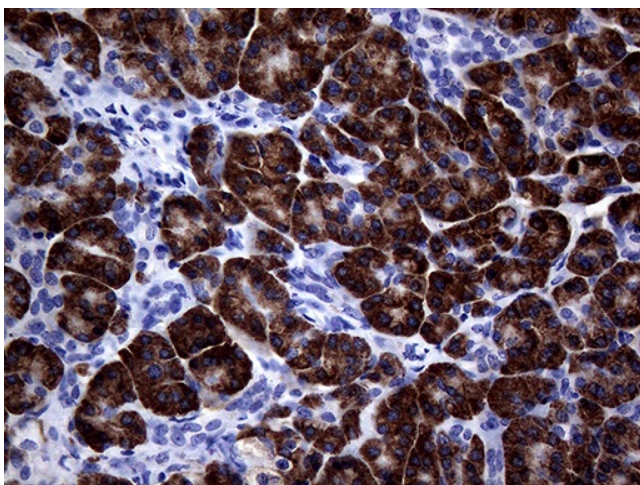
HEK293T cells were transfected with the pCMV6-ENTRY control (Cat# [PS100001], Left lane) or pCMV6-ENTRY NDUFAF5 (Cat# [RC217112], Right lane) cDNA for 48 hrs and lysed. Equivalent amounts of cell lysates (5 ug per lane) were separated by SDS-PAGE and immunoblotted with anti-NDUFAF5 (Cat# [TA809182])(1:2000). Positive lysates [LY411352] (100ug) and [LC411352] (20ug) can be purchased separately from OriGene.



Immunohistochemical staining of paraffin-embedded Human liver tissue within the normal limits using anti-NDUFAF5 mouse monoclonal antibody. Heat-induced epitope retrieval by EDTA solution buffer pH 8.0 at 120°C for 3 min.



Immunohistochemical staining of paraffin-embedded Carcinoma of Human liver tissue using anti-NDUFAF5 mouse monoclonal antibody. Heat-induced epitope retrieval by EDTA solution buffer pH 8.0 at 120°C for 3 min.



Immunohistochemical staining of paraffin-embedded Human pancreas tissue within the normal limits using anti-NDUFAF5 mouse monoclonal antibody. Heat-induced epitope retrieval by EDTA solution buffer pH 8.0 at 120°C for 3 min.