

## Product datasheet for **TA809178AM**

### Alkaline Phosphatase (ALPI) Mouse Monoclonal Antibody (Biotin conjugated) [Clone ID: OTI3C1]

#### Product data:

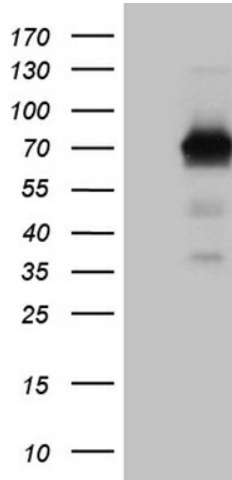
Product Type:	Primary Antibodies
Clone Name:	OTI3C1
Applications:	IHC, WB
Recommended Dilution:	WB 1:2000, IHC 1:500
Reactivity:	Human
Host:	Mouse
Isotype:	IgG2a
Clonality:	Monoclonal
Immunogen:	Full length human recombinant protein of human ALPI (NP_001622) produced in HEK293T cell.
Formulation:	PBS (pH 7.3) containing 1% BSA, 50% glycerol and 0.02% sodium azide.
Concentration:	0.5 mg/ml
Purification:	Purified from mouse ascites fluids or tissue culture supernatant by affinity chromatography (protein A/G)
Conjugation:	Biotin
Storage:	Store at -20°C as received.
Stability:	Stable for 12 months from date of receipt.
Predicted Protein Size:	54.7 kDa
Gene Name:	alkaline phosphatase, intestinal
Database Link:	<a href="#">NP_001622</a> <a href="#">Entrez Gene 248 Human</a> <a href="#">P09923</a>
Background:	There are at least four distinct but related alkaline phosphatases: intestinal, placental, placental-like, and liver/bone/kidney (tissue non-specific). The intestinal alkaline phosphatase gene encodes a digestive brush-border enzyme. This enzyme is upregulated during small intestinal epithelial cell differentiation. [provided by RefSeq, Jul 2008]



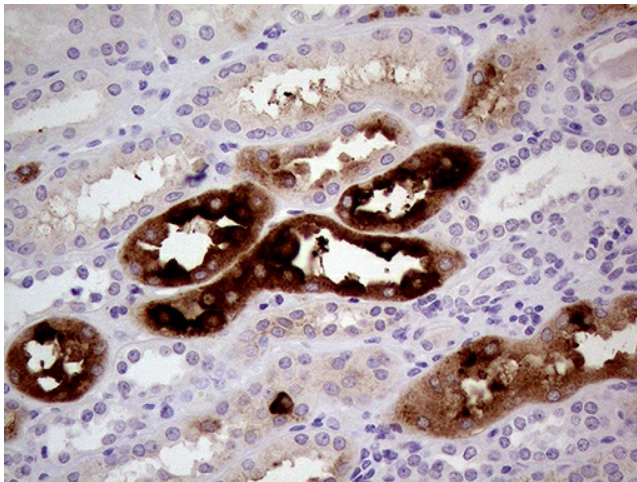
[View online »](#)

**Synonyms:** IAP  
**Protein Families:** Druggable Genome  
**Protein Pathways:** Folate biosynthesis, Metabolic pathways

**Product images:**



HEK293T cells were transfected with the pCMV6-ENTRY control (Cat# [PS100001], Left lane) or pCMV6-ENTRY ALPI (Cat# [RC224178], Right lane) cDNA for 48 hrs and lysed. Equivalent amounts of cell lysates (5 ug per lane) were separated by SDS-PAGE and immunoblotted with anti-ALPI (Cat# [TA809178])(1:2000). Positive lysates [LY400612] (100ug) and [LC400612] (20ug) can be purchased separately from OriGene.



Immunohistochemical staining of paraffin-embedded Human Kidney tissue within the normal limits using anti-ALPI mouse monoclonal antibody. (Heat-induced epitope retrieval by 1mM EDTA in 10mM Tris buffer (pH8.5) at 120°C for 3min, [TA809178]) (1:500)