

## Product datasheet for **TA809170AM**

### ASS1 Mouse Monoclonal Antibody (Biotin conjugated) [Clone ID: OT18H4]

#### Product data:

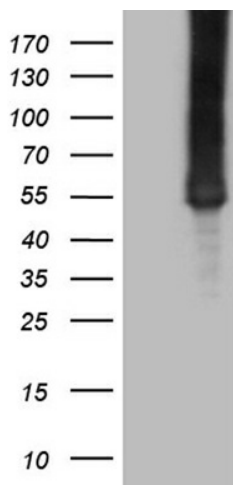
|                         |  |
|-------------------------|--|
| Product Type:           | Primary Antibodies   |
| Clone Name:             | OT18H4   |
| Applications:           | IHC, WB  |
| Recommended Dilution:   | WB 1:500~2000, IHC 1:2000  |
| Reactivity:             | Human, Mouse, Rat  |
| Host:                   | Mouse  |
| Isotype:                | IgG1   |
| Clonality:              | Monoclonal   |
| Immunogen:              | Synthetic peptide corresponding to residues near C-terminus of human ASS1 (NP_000041).   |
| Formulation:            | PBS (pH 7.3) containing 1% BSA, 50% glycerol and 0.02% sodium azide.   |
| Concentration:          | 0.5 mg/ml  |
| Purification:           | Purified from mouse ascites fluids or tissue culture supernatant by affinity chromatography (protein A/G)  |
| Conjugation:            | Biotin   |
| Storage:                | Store at -20°C as received.  |
| Stability:              | Stable for 12 months from date of receipt.   |
| Predicted Protein Size: | 46.3 kDa   |
| Gene Name:              | argininosuccinate synthase 1   |
| Database Link:          | <a href="#">NP_000041</a><br><a href="#">Entrez Gene 11898 Mouse</a> <a href="#">Entrez Gene 25698 Rat</a> <a href="#">Entrez Gene 445 Human</a><br><a href="#">P00966</a> |

**Background:** The protein encoded by this gene catalyzes the penultimate step of the arginine biosynthetic pathway. There are approximately 10 to 14 copies of this gene including the pseudogenes scattered across the human genome, among which the one located on chromosome 9 appears to be the only functional gene for argininosuccinate synthetase. Mutations in the chromosome 9 copy of this gene cause citrullinemia. Two transcript variants encoding the same protein have been found for this gene. [provided by RefSeq, Aug 2012]

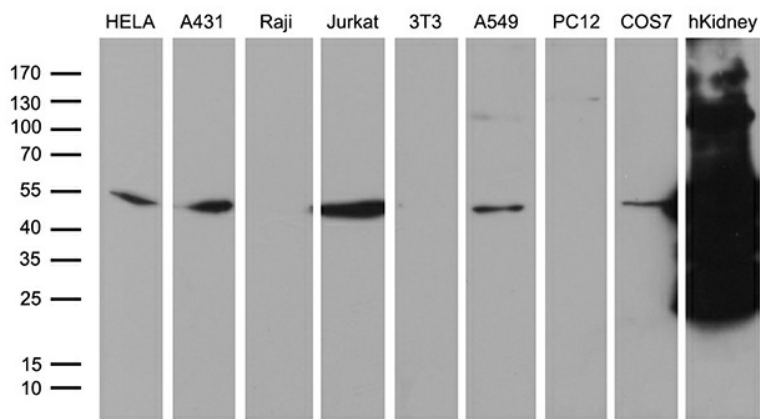


[View online »](#)

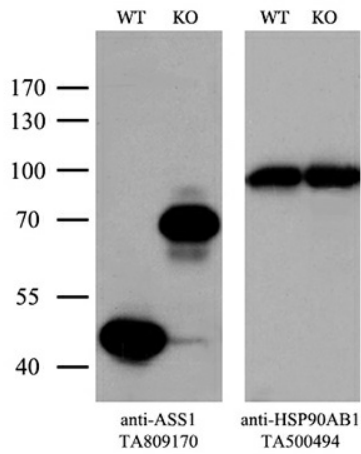
**Synonyms:** ASS; CTLN1  
**Protein Families:** Druggable Genome  
**Protein Pathways:** Alanine, aspartate and glutamate metabolism, Arginine and proline metabolism, Metabolic pathways

**Product images:**


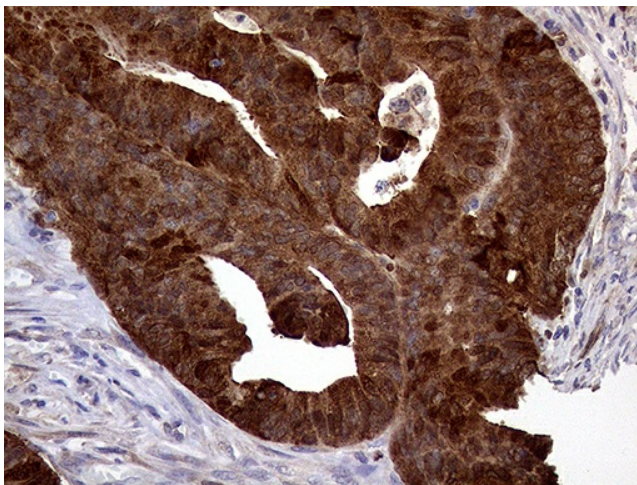
HEK293T cells were transfected with the pCMV6-ENTRY control (Left lane) or pCMV6-ENTRY ASS1 [RC223189], Right lane) cDNA for 48 hrs and lysed. Equivalent amounts of cell lysates (5 ug per lane) were separated by SDS-PAGE and immunoblotted with anti-ASS1 (1:2000). Positive lysates [LY424955] (100ug) and [LC424955] (20ug) can be purchased separately from OriGene.



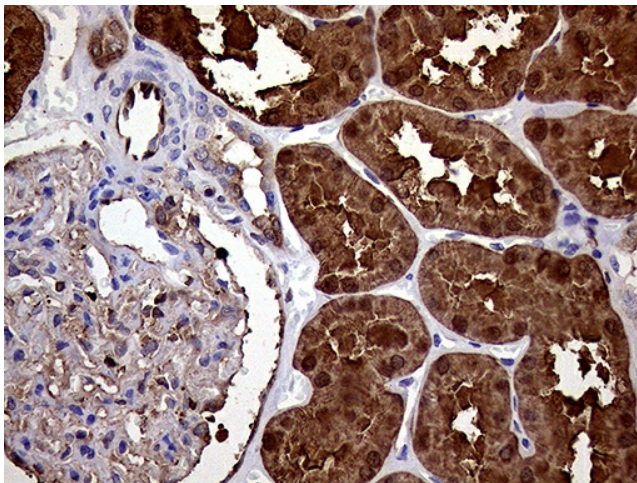
Western blot analysis of extracts (35ug) from 8 different cell lines and human kidney tissue lysate by using anti-ASS1 monoclonal antibody (1:500).



Equivalent amounts of cell lysates (10 ug per lane) of wild-type HeLa cells (WT, Cat# LC810HELA) and ASS1-Knockout HeLa cells (KO, Cat# [LC810016]) were separated by SDS-PAGE and immunoblotted with anti-ASS1 monoclonal antibody [TA809170]. Then the blotted membrane was stripped and reprobed with anti-HSP90AB1 antibody ([TA500494]) as a loading control (1:500).



Immunohistochemical staining of paraffin-embedded Adenocarcinoma of Human colon tissue using anti-ASS1 mouse monoclonal antibody. (Heat-induced epitope retrieval by 1mM EDTA in 10mM Tris buffer (pH8.5) at 120°C for 3min, [TA809170]) (1:2000)



Immunohistochemical staining of paraffin-embedded Human Kidney tissue within the normal limits using anti-ASS1 mouse monoclonal antibody. (Heat-induced epitope retrieval by 1mM EDTA in 10mM Tris buffer (pH8.5) at 120°C for 3min, [TA809170]) (1:2000)