

## Product datasheet for **TA809163AM**

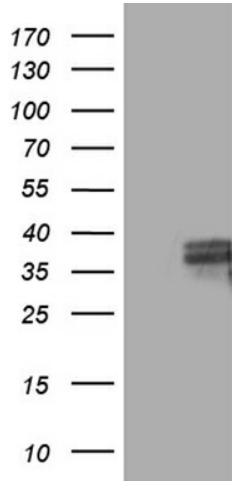
### SSU72 Mouse Monoclonal Antibody (Biotin conjugated) [Clone ID: OTI10A4]

#### Product data:

Product Type:	Primary Antibodies
Clone Name:	OTI10A4
Applications:	WB
Recommended Dilution:	WB 1:2000
Reactivity:	Human, Mouse, Rat
Host:	Mouse
Isotype:	IgG1
Clonality:	Monoclonal
Immunogen:	Full length human recombinant protein of human SSU72(NP_054907) produced in E.coli.
Formulation:	PBS (pH 7.3) containing 1% BSA, 50% glycerol and 0.02% sodium azide.
Concentration:	0.5 mg/ml
Purification:	Purified from mouse ascites fluids or tissue culture supernatant by affinity chromatography (protein A/G)
Conjugation:	Biotin
Storage:	Store at -20°C as received.
Stability:	Stable for 12 months from date of receipt.
Predicted Protein Size:	22.4 kDa
Gene Name:	SSU72 homolog, RNA polymerase II CTD phosphatase
Database Link:	<a href="#">NP_054907</a> <a href="#">Entrez Gene 29101 Human</a> <a href="#">Q9NP77</a>
Synonyms:	HSPC182; PNAS-120
Protein Families:	Druggable Genome



[View online »](#)

**Product images:**

HEK293T cells were transfected with the pCMV6-ENTRY control (Left lane) or pCMV6-ENTRY SSU72 ([RC200900], Right lane) cDNA for 48 hrs and lysed. Equivalent amounts of cell lysates (5 ug per lane) were separated by SDS-PAGE and immunoblotted with anti-SSU72 (1:2000). Positive lysates [LY415450] (100ug) and [LC415450] (20ug) can be purchased separately from OriGene.