

Product datasheet for **TA809151**

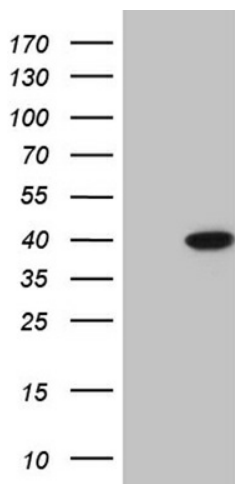
ERLIN1 Mouse Monoclonal Antibody [Clone ID: OTI4C11]

Product data:

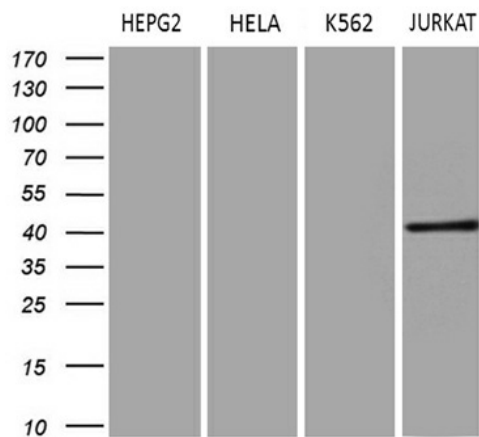
Product Type:	Primary Antibodies
Clone Name:	OTI4C11
Applications:	WB
Recommended Dilution:	WB 1:500~2000
Reactivity:	Human, Mouse, Rat
Host:	Mouse
Isotype:	IgG1
Clonality:	Monoclonal
Immunogen:	Human recombinant protein fragment corresponding to amino acids 107-346 of human ERLIN1(NP_006450) produced in E.coli.
Formulation:	PBS (pH 7.3) containing 1% BSA, 50% glycerol and 0.02% sodium azide.
Concentration:	1 mg/ml
Purification:	Purified from mouse ascites fluids or tissue culture supernatant by affinity chromatography (protein A/G)
Conjugation:	Unconjugated
Storage:	Store at -20°C as received.
Stability:	Stable for 12 months from date of receipt.
Predicted Protein Size:	39 kDa
Gene Name:	ER lipid raft associated 1
Database Link:	NP_006450 Entrez Gene 226144 Mouse Entrez Gene 293939 Rat Entrez Gene 10613 Human O75477
Synonyms:	C10orf69; Erlin-1; KE04; KEO4; SPFH1; SPG62
Protein Families:	Transmembrane



[View online »](#)

Product images:


HEK293T cells were transfected with the pCMV6-ENTRY control (Left lane) or pCMV6-ENTRY ERLIN1 ([RC205137], Right lane) cDNA for 48 hrs and lysed. Equivalent amounts of cell lysates (5 ug per lane) were separated by SDS-PAGE and immunoblotted with anti-ERLIN1 (1:2000). Positive lysates [LY416643] (100ug) and [LC416643] (20ug) can be purchased separately from OriGene.



Western blot analysis of extracts (35ug) from 4 different cell lines by using anti-ERLIN1 monoclonal antibody (1:500).