

Product datasheet for **TA809149BM**

ELP4 Mouse Monoclonal Antibody (HRP conjugated) [Clone ID: OTI4E2]

Product data:

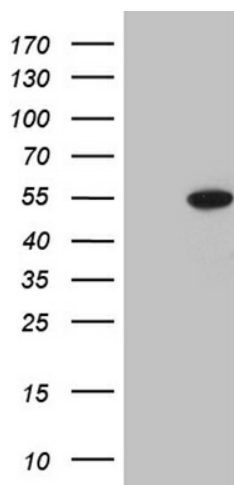
Product Type:	Primary Antibodies
Clone Name:	OTI4E2
Applications:	WB
Recommended Dilution:	WB 1:2000
Reactivity:	Human
Host:	Mouse
Isotype:	IgG1
Clonality:	Monoclonal
Immunogen:	Human recombinant protein fragment corresponding to amino acids 133-407 of human ELP4(NP_061913) produced in E.coli.
Formulation:	PBS (pH 7.3) containing 1% BSA, 50% glycerol.
Concentration:	0.5 mg/ml
Purification:	Purified from mouse ascites fluids or tissue culture supernatant by affinity chromatography (protein A/G)
Conjugation:	HRP
Storage:	Store at -20°C as received.
Stability:	Stable for 12 months from date of receipt.
Predicted Protein Size:	47 kDa
Gene Name:	elongator acetyltransferase complex subunit 4
Database Link:	NP_061913 Entrez Gene 26610 Human Q96EB1
Background:	This gene encodes a component of the six subunit elongator complex, a histone acetyltransferase complex that associates directly with RNA polymerase II during transcriptional elongation. The human gene can partially complement sensitivity phenotypes of yeast ELP4 deletion mutants. This gene has also been associated with Rolandic epilepsy. Alternative splicing results in multiple transcript variants. [provided by RefSeq, Dec 2013]



[View online »](#)

Synonyms: AN; C11orf19; dJ68P15A.1; hELP4; PAX6NEB; PAXNEB

Product images:



HEK293T cells were transfected with the pCMV6-ENTRY control (Left lane) or pCMV6-ENTRY ELP4 ([RC219128], Right lane) cDNA for 48 hrs and lysed. Equivalent amounts of cell lysates (5 ug per lane) were separated by SDS-PAGE and immunoblotted with anti-ELP4 (1:2000). Positive lysates [LY412806] (100ug) and [LC412806] (20ug) can be purchased separately from OriGene.