

Product datasheet for **TA809135AM**

NCF4 Mouse Monoclonal Antibody (Biotin conjugated) [Clone ID: OTI4B5]

Product data:

Product Type:	Primary Antibodies
Clone Name:	OTI4B5
Applications:	IHC, WB
Recommended Dilution:	WB 1:2000, IHC 1:150
Reactivity:	Human, Mouse, Rat
Host:	Mouse
Isotype:	IgG1
Clonality:	Monoclonal
Immunogen:	Full length human recombinant protein of human NCF4 (NP_000622) produced in HEK293T cell.
Formulation:	PBS (pH 7.3) containing 1% BSA, 50% glycerol and 0.02% sodium azide.
Concentration:	0.5 mg/ml
Purification:	Purified from mouse ascites fluids or tissue culture supernatant by affinity chromatography (protein A/G)
Conjugation:	Biotin
Storage:	Store at -20°C as received.
Stability:	Stable for 12 months from date of receipt.
Predicted Protein Size:	38.9 kDa
Gene Name:	neutrophil cytosolic factor 4
Database Link:	NP_000622 Entrez Gene 17972 Mouse Entrez Gene 500904 Rat Entrez Gene 4689 Human Q15080



[View online »](#)

Background:

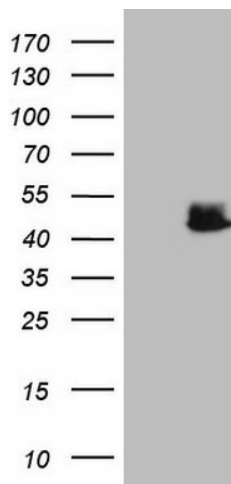
The protein encoded by this gene is a cytosolic regulatory component of the superoxide-producing phagocyte NADPH-oxidase, a multicomponent enzyme system important for host defense. This protein is preferentially expressed in cells of myeloid lineage. It interacts primarily with neutrophil cytosolic factor 2 (NCF2/p67-phox) to form a complex with neutrophil cytosolic factor 1 (NCF1/p47-phox), which further interacts with the small G protein RAC1 and translocates to the membrane upon cell stimulation. This complex then activates flavocytochrome b, the membrane-integrated catalytic core of the enzyme system. The PX domain of this protein can bind phospholipid products of the PI(3) kinase, which suggests its role in PI(3) kinase-mediated signaling events. The phosphorylation of this protein was found to negatively regulate the enzyme activity. Alternatively spliced transcript variants encoding distinct isoforms have been observed. [provided by RefSeq, Jul 2008]

Synonyms:

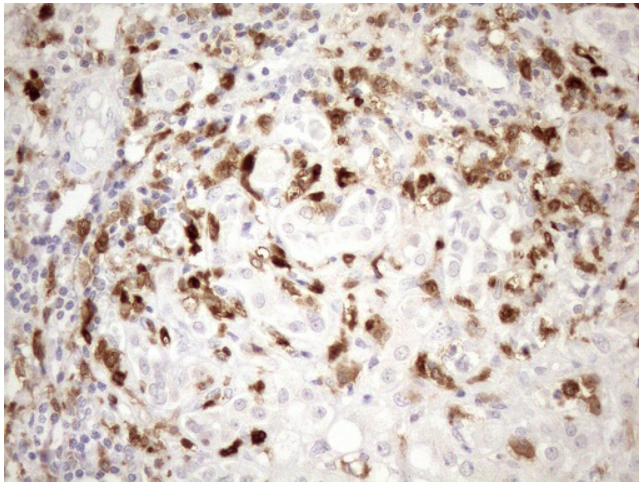
NCF; P40PHOX; SH3PXD4

Protein Pathways:

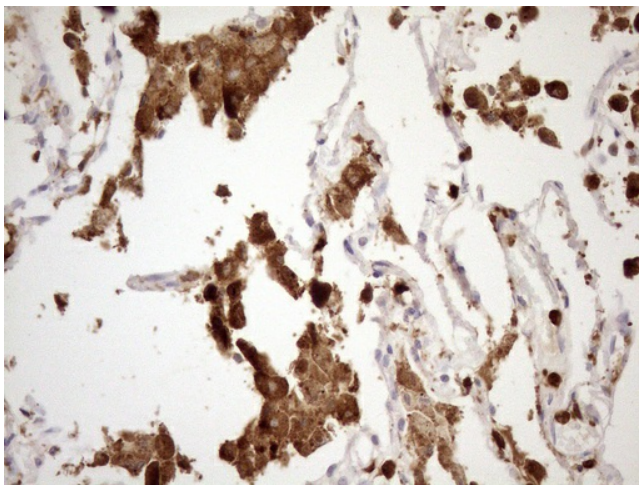
Leukocyte transendothelial migration

Product images:

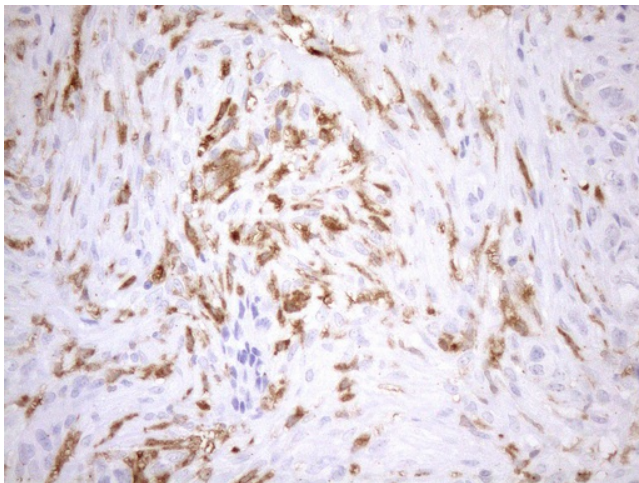
HEK293T cells were transfected with the pCMV6-ENTRY control (Cat# [PS100001], Left lane) or pCMV6-ENTRY NCF4 (Cat# [RC216094], Right lane) cDNA for 48 hrs and lysed. Equivalent amounts of cell lysates (5 ug per lane) were separated by SDS-PAGE and immunoblotted with anti-NCF4 (Cat# [TA809135])(1:2000). Positive lysates [LY424600] (100ug) and [LC424600] (20ug) can be purchased separately from OriGene.



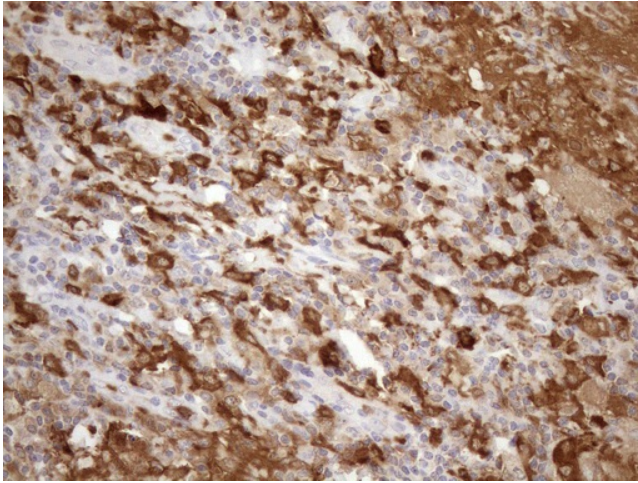
Immunohistochemical staining of paraffin-embedded Carcinoma of Human liver tissue using anti-NCF4 mouse monoclonal antibody. (Heat-induced epitope retrieval by 1mM EDTA in 10mM Tris buffer (pH8.5) at 120°C for 3min, [TA809135]) (1:150)



Immunohistochemical staining of paraffin-embedded Human lung tissue within the normal limits using anti-NCF4 mouse monoclonal antibody. (Heat-induced epitope retrieval by 1mM EDTA in 10mM Tris buffer (pH8.5) at 120°C for 3min, [TA809135]) (1:150)



Immunohistochemical staining of paraffin-embedded Adenocarcinoma of Human endometrium tissue using anti-NCF4 mouse monoclonal antibody. (Heat-induced epitope retrieval by 1mM EDTA in 10mM Tris buffer (pH8.5) at 120°C for 3min, [TA809135]) (1:150)



Immunohistochemical staining of paraffin-embedded Human lymph node tissue within the normal limits using anti-NCF4 mouse monoclonal antibody. (Heat-induced epitope retrieval by 1mM EDTA in 10mM Tris buffer (pH8.5) at 120°C for 3min, [TA809135]) (1:150)