

Product datasheet for **TA809088AM**

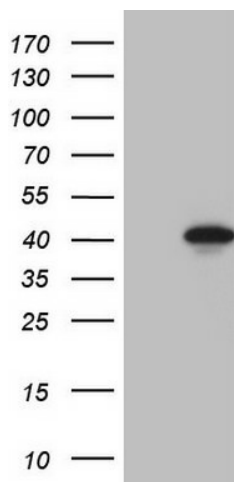
LUZP4 Mouse Monoclonal Antibody (Biotin conjugated) [Clone ID: OTI3A10]

Product data:

Product Type:	Primary Antibodies
Clone Name:	OTI3A10
Applications:	WB
Recommended Dilution:	WB 1:2000
Reactivity:	Human
Host:	Mouse
Isotype:	IgG1
Clonality:	Monoclonal
Immunogen:	Full length human recombinant protein of human LUZP4 (NP_057467) produced in E.coli.
Formulation:	PBS (pH 7.3) containing 1% BSA, 50% glycerol and 0.02% sodium azide.
Concentration:	0.5 mg/ml
Purification:	Purified from mouse ascites fluids or tissue culture supernatant by affinity chromatography (protein A/G)
Conjugation:	Biotin
Storage:	Store at -20°C as received.
Stability:	Stable for 12 months from date of receipt.
Predicted Protein Size:	35.8 kDa
Gene Name:	leucine zipper protein 4
Database Link:	NP_057467 Entrez Gene 51213 Human Q9P127
Background:	This gene encodes a protein which contains two sets of heptad repeats in the N-terminus; the C-terminal most repeats form a leucine zipper domain. The presence of a leucine zipper domain suggests the protein may have DNA-binding activity and the protein has been shown to localize with a spliceosome protein (PMID: 12032826). [provided by RefSeq, Aug 2011]
Synonyms:	CT-8; CT-28; CT28; HOM-TES-85
Protein Families:	Druggable Genome



[View online »](#)

Product images:

HEK293T cells were transfected with the pCMV6-ENTRY control (Left lane) or pCMV6-ENTRY LUZP4 ([RC215624], Right lane) cDNA for 48 hrs and lysed. Equivalent amounts of cell lysates (5 ug per lane) were separated by SDS-PAGE and immunoblotted with anti-LUZP4 (1:2000). Positive lysates [LY413991] (100ug) and [LC413991] (20ug) can be purchased separately from OriGene.