

## Product datasheet for **TA809056AM**

### **S100A5 Mouse Monoclonal Antibody (Biotin conjugated) [Clone ID: OTI4C9]**

#### **Product data:**

Product Type:	Primary Antibodies
Clone Name:	OTI4C9
Applications:	WB
Recommended Dilution:	WB 1:2000
Reactivity:	Human, Mouse, Rat
Host:	Mouse
Isotype:	IgG1
Clonality:	Monoclonal
Immunogen:	Full length human recombinant protein of human S100A5 (NP_002953) produced in 293T cell.
Formulation:	PBS (pH 7.3) containing 1% BSA, 50% glycerol and 0.02% sodium azide.
Concentration:	0.5 mg/ml
Purification:	Purified from mouse ascites fluids or tissue culture supernatant by affinity chromatography (protein A/G)
Conjugation:	Biotin
Storage:	Store at -20°C as received.
Stability:	Stable for 12 months from date of receipt.
Predicted Protein Size:	12.6 kDa
Gene Name:	S100 calcium binding protein A5
Database Link:	<a href="#">NP_002953</a> <a href="#">Entrez Gene 20199 Mouse</a> <a href="#">Entrez Gene 295211 Rat</a> <a href="#">Entrez Gene 6276 Human</a> <a href="#">P33763</a>



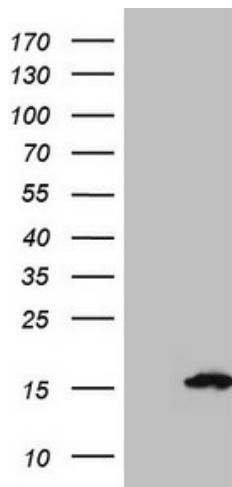
[View online »](#)

**Background:**

The protein encoded by this gene is a member of the S100 family of proteins containing 2 EF-hand calcium-binding motifs. S100 proteins are localized in the cytoplasm and/or nucleus of a wide range of cells, and involved in the regulation of a number of cellular processes such as cell cycle progression and differentiation. S100 genes include at least 13 members which are located as a cluster on chromosome 1q21. This protein has a Ca<sup>2+</sup> affinity 20- to 100-fold higher than the other S100 proteins studied under identical conditions. This protein also binds Zn<sup>2+</sup> and Cu<sup>2+</sup>, and Cu<sup>2+</sup> strongly which impairs the binding of Ca<sup>2+</sup>. This protein is expressed in very restricted regions of the adult brain. [provided by RefSeq, Jul 2008]

**Synonyms:**

S100D

**Product images:**

HEK293T cells were transfected with the pCMV6-ENTRY control (Cat# [PS100001], Left lane) or pCMV6-ENTRY S100A5 (Cat# [RC210891], Right lane) cDNA for 48 hrs and lysed. Equivalent amounts of cell lysates (5 ug per lane) were separated by SDS-PAGE and immunoblotted with anti-S100A5 (1:2000) (Cat# [TA809056]). Positive lysates [LY418992] (100ug) and [LC418992] (20ug) can be purchased separately from OriGene.