

Product datasheet for **TA809041BM**

BNP (NPPB) Mouse Monoclonal Antibody (HRP conjugated) [Clone ID: OT18A9]

Product data:

Product Type:	Primary Antibodies
Clone Name:	OT18A9
Applications:	LMNX, WB
Recommended Dilution:	WB 1:2000
Reactivity:	Human
Host:	Mouse
Isotype:	IgG1
Clonality:	Monoclonal
Immunogen:	Human recombinant protein fragment corresponding to amino acids 27-102 of human NPPB (NP_002512) produced in E.coli.
Formulation:	PBS (pH 7.3) containing 1% BSA, 50% glycerol.
Concentration:	0.5 mg/ml
Purification:	Purified from mouse ascites fluids or tissue culture supernatant by affinity chromatography (protein A/G)
Conjugation:	HRP
Storage:	Store at -20°C as received.
Stability:	Stable for 12 months from date of receipt.
Predicted Protein Size:	11.9 kDa
Gene Name:	natriuretic peptide B
Database Link:	NP_002512 Entrez Gene 4879 Human P16860



[View online »](#)

Background:

This gene is a member of the natriuretic peptide family and encodes a secreted protein which functions as a cardiac hormone. The protein undergoes two cleavage events, one within the cell and a second after secretion into the blood. The protein's biological actions include natriuresis, diuresis, vasorelaxation, inhibition of renin and aldosterone secretion, and a key role in cardiovascular homeostasis. A high concentration of this protein in the bloodstream is indicative of heart failure. Mutations in this gene have been associated with postmenopausal osteoporosis. [provided by RefSeq, Jul 2008]

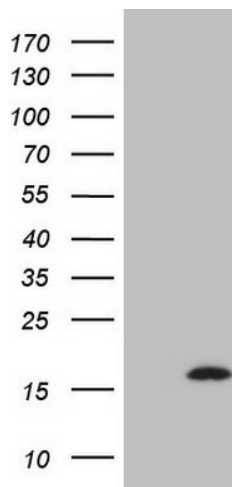
Synonyms:

BNP; Iso-ANP

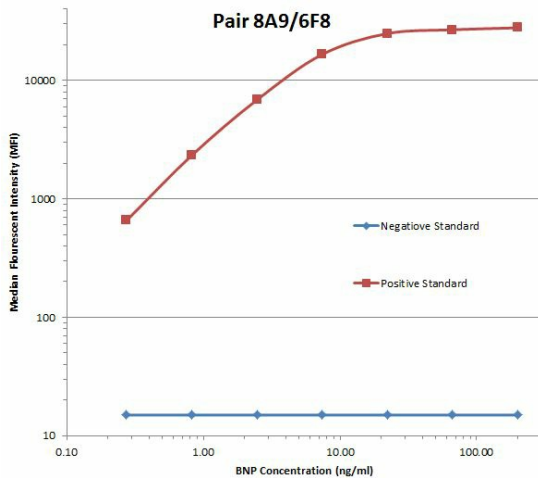
Protein Families:

Druggable Genome, Secreted Protein, Stem cell - Pluripotency

Product images:



HEK293T cells were transfected with the pCMV6-ENTRY control (Left lane) or pCMV6-ENTRY NPPB ([RC206590], Right lane) cDNA for 48 hrs and lysed. Equivalent amounts of cell lysates (5 ug per lane) were separated by SDS-PAGE and immunoblotted with anti-NPPB (1:2000). Positive lysates [LY400900] (100ug) and [LC400900] (20ug) can be purchased separately from OriGene.



NPPB (BNP/NT-ProBNP) Luminex ELISA with 8A9 Capture ([TA809041]) and 6F8 Detection ([TA809024]) Antibodies. Substrate used: Recombinant Human BNP/NT-ProBNP domain expressed in E.coli.