

Product datasheet for **TA809030M**

Cyclophilin F (PPIF) Mouse Monoclonal Antibody [Clone ID: OTI7D12]

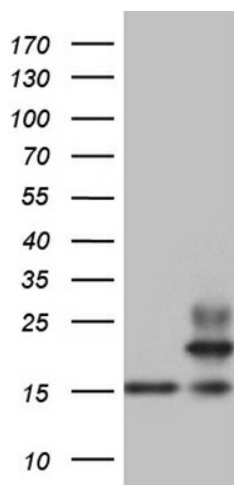
Product data:

Product Type:	Primary Antibodies
Clone Name:	OTI7D12
Applications:	IHC, WB
Recommended Dilution:	WB 1:500~2000, IHC 1:1000
Reactivity:	Human, Mouse, Rat
Host:	Mouse
Isotype:	IgG2a
Clonality:	Monoclonal
Immunogen:	Full length human recombinant protein of human PPIF(NP_005720) produced in E.coli.
Formulation:	PBS (pH 7.3) containing 1% BSA, 50% glycerol and 0.02% sodium azide.
Concentration:	1 mg/ml
Purification:	Purified from mouse ascites fluids or tissue culture supernatant by affinity chromatography (protein A/G)
Conjugation:	Unconjugated
Storage:	Store at -20°C as received.
Stability:	Stable for 12 months from date of receipt.
Predicted Protein Size:	18.8 kDa
Gene Name:	peptidylprolyl isomerase F
Database Link:	NP_005720 Entrez Gene 105675 Mouse Entrez Gene 282819 Rat Entrez Gene 10105 Human P30405
Background:	The protein encoded by this gene is a member of the peptidyl-prolyl cis-trans isomerase (PPIase) family. PPIases catalyze the cis-trans isomerization of proline imidic peptide bonds in oligopeptides and accelerate the folding of proteins. This protein is part of the mitochondrial permeability transition pore in the inner mitochondrial membrane. Activation of this pore is thought to be involved in the induction of apoptotic and necrotic cell death. [provided by RefSeq, Jul 2008]

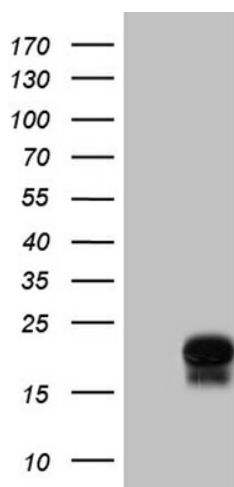

[View online »](#)

Synonyms: Cyp-D; CyP-M; CYP3; CypD

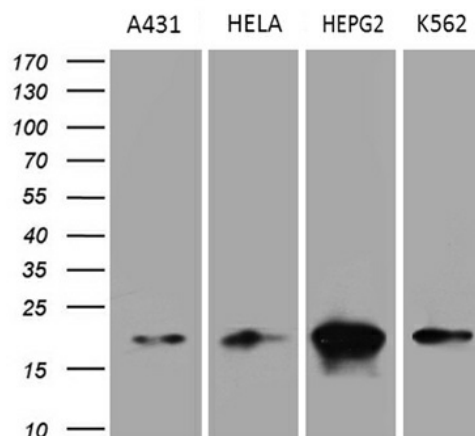
Product images:



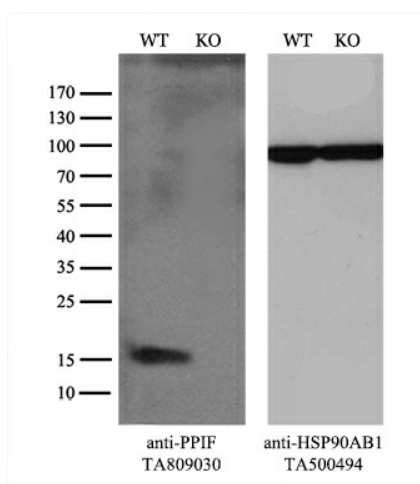
HEK293T cells were transfected with the pCMV6-ENTRY control (Left lane) or pCMV6-ENTRY PPIF ([RC223397], Right lane) cDNA for 48 hrs and lysed. Equivalent amounts of cell lysates (5 ug per lane) were separated by SDS-PAGE and immunoblotted with anti-PPIF (1:2000). Positive lysates [LY417109] (100ug) and [LC417109] (20ug) can be purchased separately from OriGene.



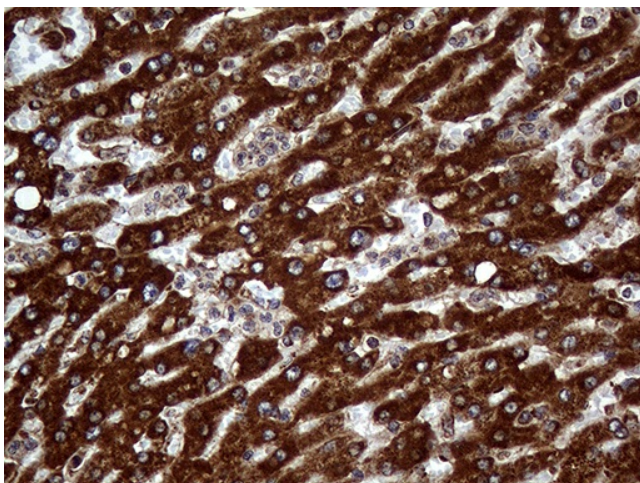
Western blot analysis of extracts (35ug) from mouse heart tissue lysate by using anti-PPIF monoclonal antibody (1:500).



Western blot analysis of extracts (35ug) from 4 different cell lines by using anti-PPIF monoclonal antibody (1:500).



Equivalent amounts of cell lysates (10 ug per lane) of wild-type 293T cells (WT, Cat# LC810293T) and PPIF-Knockout 293T cells (KO, Cat# [LC811541]) were separated by SDS-PAGE and immunoblotted with anti-PPIF monoclonal antibody [TA809030], (1:1000). Then the blotted membrane was stripped and reprobed with anti-HSP90AB1 antibody [TA500494] as a loading control.



Immunohistochemical staining of paraffin-embedded Carcinoma of Human liver tissue using anti-PPIF mouse monoclonal antibody. Heat-induced epitope retrieval by EDTA solution buffer pH 8.0 at 120°C for 3 min.