

Product datasheet for **TA809027M**

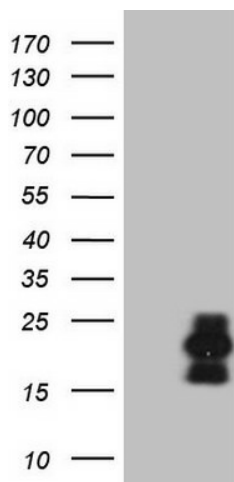
C3orf36 Mouse Monoclonal Antibody [Clone ID: OTI8G4]

Product data:

Product Type:	Primary Antibodies
Clone Name:	OTI8G4
Applications:	WB
Recommended Dilution:	WB 1:2000
Reactivity:	Human
Host:	Mouse
Isotype:	IgG1
Clonality:	Monoclonal
Immunogen:	Full length human recombinant protein of human C3orf36(NP_079317) produced in E.coli.
Formulation:	PBS (pH 7.3) containing 1% BSA, 50% glycerol and 0.02% sodium azide.
Concentration:	1 mg/ml
Purification:	Purified from mouse ascites fluids or tissue culture supernatant by affinity chromatography (protein A/G)
Conjugation:	Unconjugated
Storage:	Store at -20°C as received.
Stability:	Stable for 12 months from date of receipt.
Gene Name:	chromosome 3 open reading frame 36
Database Link:	NP_079317 Entrez Gene 80111 Human Q3SXR2
Synonyms:	FLJ22173; MGC125760; MGC125761



[View online »](#)

Product images:


HEK293T cells were transfected with the pCMV6-ENTRY control (Cat# [PS100001], Left lane) or pCMV6-ENTRY C3orf36 (Cat# [RC224374], Right lane) cDNA for 48 hrs and lysed. Equivalent amounts of cell lysates (5 ug per lane) were separated by SDS-PAGE and immunoblotted with anti-C3orf36 (Cat# [TA809027])(1:2000). Positive lysates [LY410923] (100ug) and [LC410923] (20ug) can be purchased separately from OriGene.