

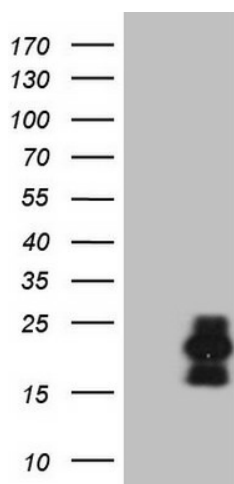
## Product datasheet for **TA809027AM**

### **C3orf36 Mouse Monoclonal Antibody (Biotin conjugated) [Clone ID: OTI8G4]**

#### **Product data:**

Product Type:	Primary Antibodies
Clone Name:	OTI8G4
Applications:	WB
Recommended Dilution:	WB 1:2000
Reactivity:	Human
Host:	Mouse
Isotype:	IgG1
Clonality:	Monoclonal
Immunogen:	Full length human recombinant protein of human C3orf36(NP_079317) produced in E.coli.
Formulation:	PBS (pH 7.3) containing 1% BSA, 50% glycerol and 0.02% sodium azide.
Concentration:	0.5 mg/ml
Purification:	Purified from mouse ascites fluids or tissue culture supernatant by affinity chromatography (protein A/G)
Conjugation:	Biotin
Storage:	Store at -20°C as received.
Stability:	Stable for 12 months from date of receipt.
Gene Name:	chromosome 3 open reading frame 36
Database Link:	<a href="#">NP_079317</a> <a href="#">Entrez Gene 80111 Human</a> <a href="#">Q3SXR2</a>
Synonyms:	FLJ22173; MGC125760; MGC125761

[View online »](#)

**Product images:**


HEK293T cells were transfected with the pCMV6-ENTRY control (Cat# [PS100001], Left lane) or pCMV6-ENTRY C3orf36 (Cat# [RC224374], Right lane) cDNA for 48 hrs and lysed. Equivalent amounts of cell lysates (5 ug per lane) were separated by SDS-PAGE and immunoblotted with anti-C3orf36 (Cat# [TA809027])(1:2000). Positive lysates [LY410923] (100ug) and [LC410923] (20ug) can be purchased separately from OriGene.