

## Product datasheet for **TA809015**

### PSD95 (DLG4) Mouse Monoclonal Antibody [Clone ID: OTI12A5]

#### Product data:

Product Type:	Primary Antibodies
Clone Name:	OTI12A5
Applications:	WB
Recommended Dilution:	WB 1:2000
Reactivity:	Human, Mouse, Rat
Host:	Mouse
Isotype:	IgG1
Clonality:	Monoclonal
Immunogen:	Full length human recombinant protein of human DLG4 (NP_001356) produced in HEK293T cell.
Formulation:	PBS (pH 7.3) containing 1% BSA, 50% glycerol and 0.02% sodium azide.
Concentration:	1 mg/ml
Purification:	Purified from mouse ascites fluids or tissue culture supernatant by affinity chromatography (protein A/G)
Conjugation:	Unconjugated
Storage:	Store at -20°C as received.
Stability:	Stable for 12 months from date of receipt.
Gene Name:	discs large MAGUK scaffold protein 4
Database Link:	<a href="#">NP_001356</a> <a href="#">Entrez Gene 13385 Mouse</a> <a href="#">Entrez Gene 29495 Rat</a> <a href="#">Entrez Gene 1742 Human</a> <a href="#">P78352</a>
Background:	This gene encodes a member of the membrane-associated guanylate kinase (MAGUK) family. It heteromultimerizes with another MAGUK protein, DLG2, and is recruited into NMDA receptor and potassium channel clusters. These two MAGUK proteins may interact at postsynaptic sites to form a multimeric scaffold for the clustering of receptors, ion channels, and associated signaling proteins. Multiple transcript variants encoding different isoforms have been found for this gene. [provided by RefSeq, Jul 2008]
Synonyms:	PSD95; SAP-90; SAP90

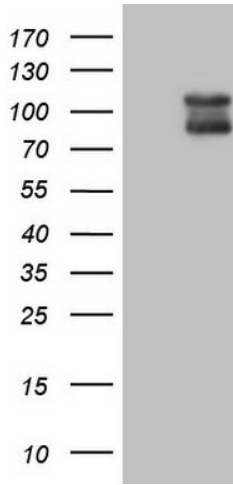


[View online »](#)

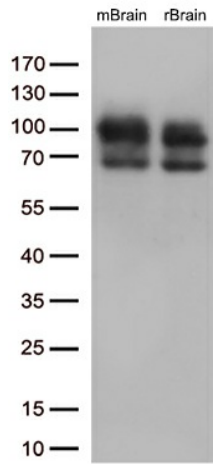
Protein Families: Druggable Genome

Protein Pathways: Huntington's disease

**Product images:**



HEK293T cells were transfected with the pCMV6-ENTRY control (Cat# [PS100001], Left lane) or pCMV6-ENTRY DLG4 (Cat# [RC215178], Right lane) cDNA for 48 hrs and lysed. Equivalent amounts of cell lysates (5 ug per lane) were separated by SDS-PAGE and immunoblotted with anti-DLG4 (1:2000) (Cat# TA809015). Positive lysates [LY419977] (100ug) and [LC419977] (20ug) can be purchased separately from OriGene.



Western blot analysis of extracts (35ug) from 2 different tissues by using anti-DLG4 monoclonal antibody (1:500).