

## Product datasheet for **TA808990M**

### PD L2 (PDCD1LG2) Mouse Monoclonal Antibody [Clone ID: OTI7B10]

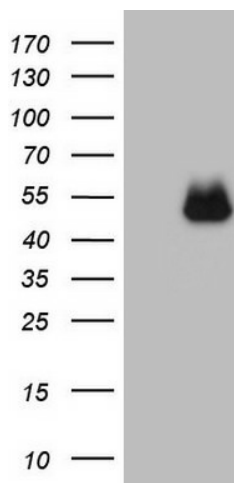
#### Product data:

Product Type:	Primary Antibodies
Clone Name:	OTI7B10
Applications:	FC, IHC, WB
Recommended Dilution:	WB 1:2000
Reactivity:	Human
Host:	Mouse
Isotype:	IgG1
Clonality:	Monoclonal
Immunogen:	Full length human recombinant protein of human PDCD1LG2 (NP_079515) produced in HEK293T cell.
Formulation:	PBS (pH 7.3) containing 1% BSA, 50% glycerol and 0.02% sodium azide.
Concentration:	1 mg/ml
Purification:	Purified from mouse ascites fluids or tissue culture supernatant by affinity chromatography (protein A/G)
Conjugation:	Unconjugated
Storage:	Store at -20°C as received.
Stability:	Stable for 12 months from date of receipt.
Predicted Protein Size:	30.8 kDa
Gene Name:	programmed cell death 1 ligand 2
Database Link:	<a href="#">NP_079515</a> <a href="#">Entrez Gene 80380 Human</a> <a href="#">Q9BQ51</a>
Background:	Involved in the costimulatory signal, essential for T-cell proliferation and IFNG production in a PDCD1-independent manner. Interaction with PDCD1 inhibits T-cell proliferation by blocking cell cycle progression and cytokine production. [UniProtKB/Swiss-Prot Function]
Synonyms:	B7DC; bA574F11.2; Btdc; CD273; PD-L2; PDCD1L2; PDL2
Protein Families:	Transmembrane

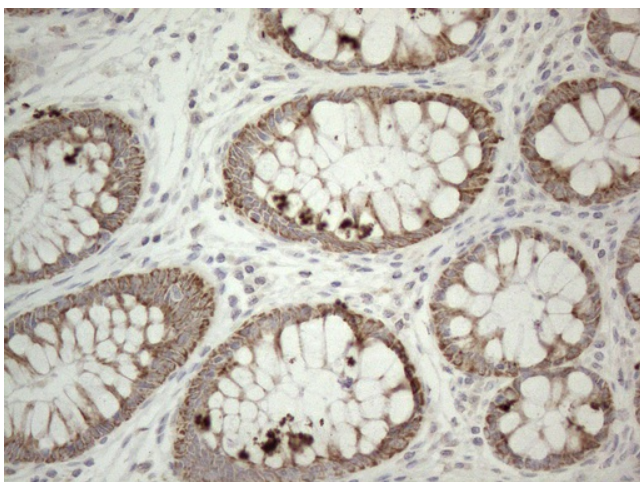

[View online »](#)

Protein Pathways: Cell adhesion molecules (CAMs)

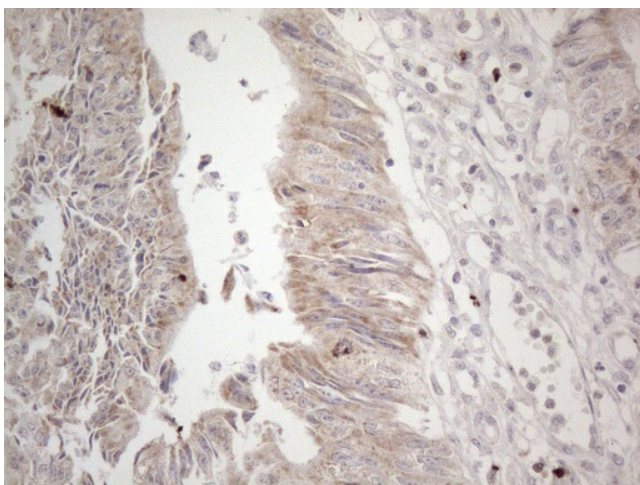
## Product images:



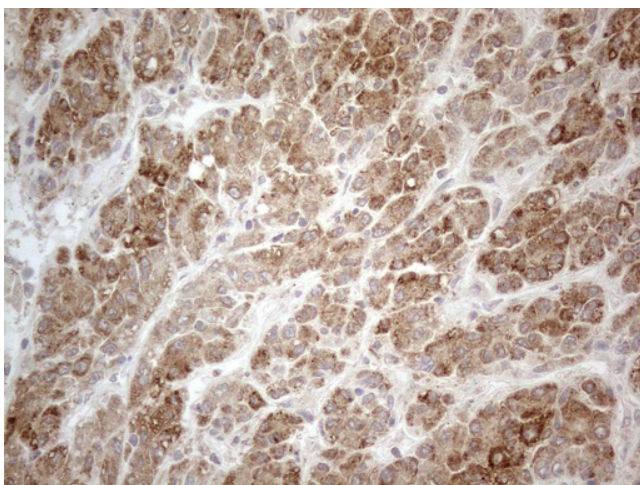
HEK293T cells were transfected with the pCMV6-ENTRY control (Cat# [PS100001], Left lane) or pCMV6-ENTRY PDCD1LG2 (Cat# [RC224141], Right lane) cDNA for 48 hrs and lysed. Equivalent amounts of cell lysates (5 ug per lane) were separated by SDS-PAGE and immunoblotted with anti-PDCD1LG2 (Cat# [TA808990])(1:2000). Positive lysates [LY410802] (100ug) and [LC410802] (20ug) can be purchased separately from OriGene.



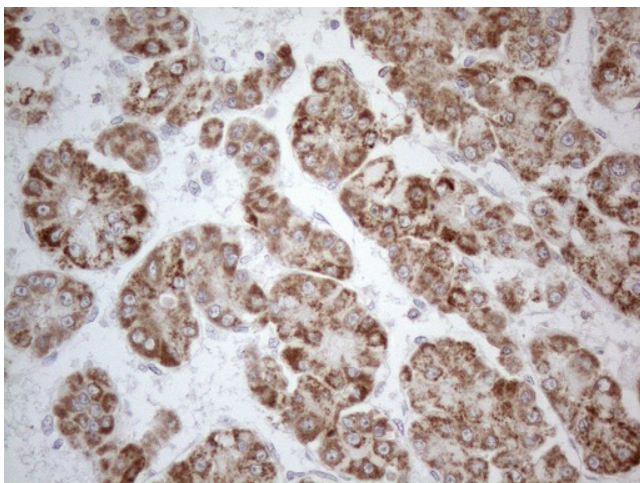
Immunohistochemical staining of paraffin-embedded Human colon tissue within the normal limits using anti-PDCD1LG2 mouse monoclonal antibody. Heat-induced epitope retrieval by EDTA solution buffer pH 8.0 at 120°C for 3 min.



Immunohistochemical staining of paraffin-embedded Adenocarcinoma of Human colon tissue using anti-PDCD1LG2 mouse monoclonal antibody. Heat-induced epitope retrieval by EDTA solution buffer pH 8.0 at 120°C for 3 min.

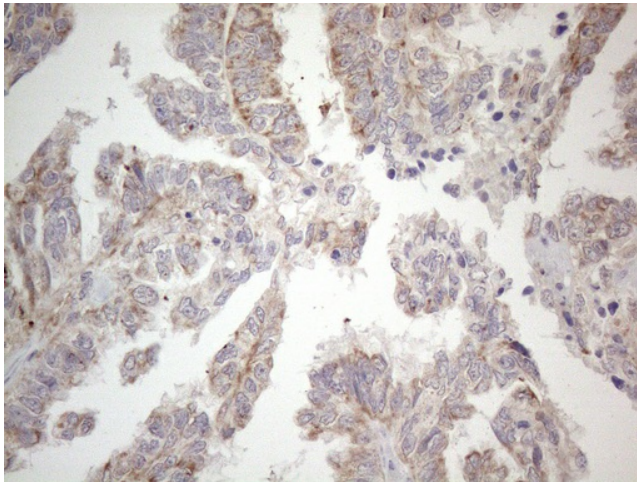


Immunohistochemical staining of paraffin-embedded Human liver tissue within the normal limits using anti-PDCD1LG2 mouse monoclonal antibody. Heat-induced epitope retrieval by EDTA solution buffer pH 8.0 at 120°C for 3 min.

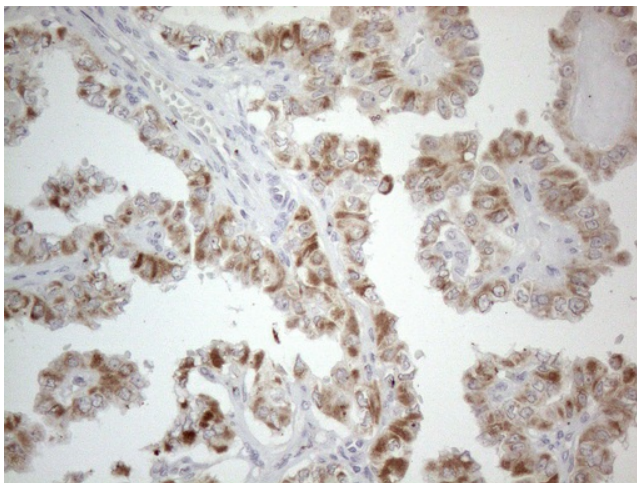


Immunohistochemical staining of paraffin-embedded Carcinoma of Human liver tissue using anti-PDCD1LG2 mouse monoclonal antibody Dilution: 1:150. Heat-induced epitope retrieval by EDTA solution buffer pH 8.0 at 120°C for 3 min.

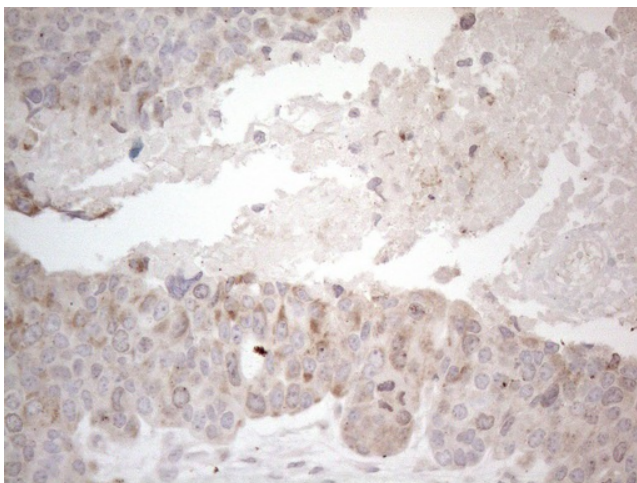




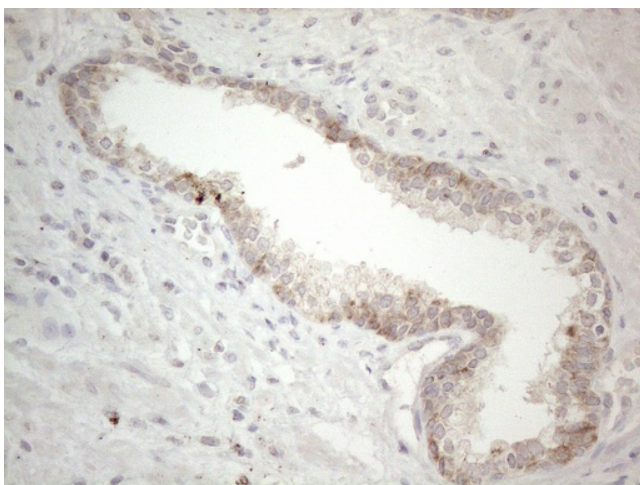
Immunohistochemical staining of paraffin-embedded Adenocarcinoma of Human ovary tissue using anti-PDCD1LG2 mouse monoclonal antibody. Heat-induced epitope retrieval by EDTA solution buffer pH 8.0 at 120°C for 3 min.



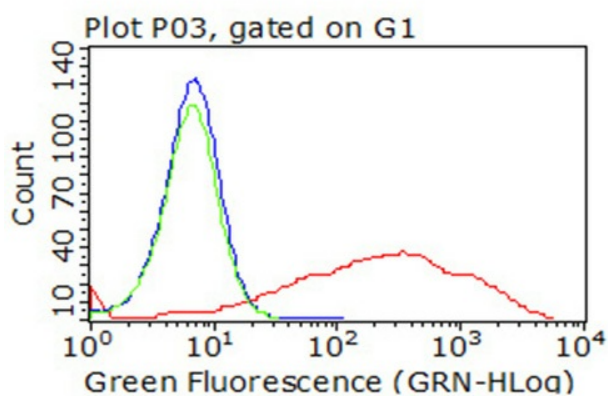
Immunohistochemical staining of paraffin-embedded Carcinoma of Human thyroid tissue using anti-PDCD1LG2 mouse monoclonal antibody Dilution: 1:150. Heat-induced epitope retrieval by EDTA solution buffer pH 8.0 at 120°C for 3 min.



Immunohistochemical staining of paraffin-embedded Adenocarcinoma of Human endometrium tissue using anti-PDCD1LG2 mouse monoclonal antibody. Heat-induced epitope retrieval by EDTA solution buffer pH 8.0 at 120°C for 3 min.



Immunohistochemical staining of paraffin-embedded Carcinoma of Human prostate tissue using anti-PDCD1LG2 mouse monoclonal antibody. Heat-induced epitope retrieval by EDTA solution buffer pH 8.0 at 120°C for 3 min.



Flow cytometric analysis of living 293T cells transfected with PDL2 overexpression plasmid ([RC224141], Red)/empty vector ([PS100001], Blue) using anti-PDL2 antibody ([TA808990]). Cells incubated with a non-specific antibody (Green) were used as isotype control (1:100).