

## Product datasheet for **TA808983AM**

### PD L2 (PDCD1LG2) Mouse Monoclonal Antibody (Biotin conjugated) [Clone ID: OTI6C3]

#### Product data:

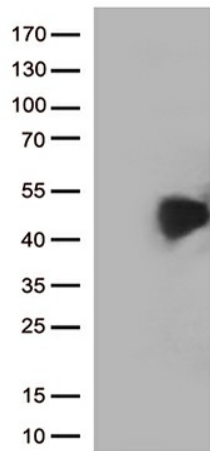
Product Type:	Primary Antibodies
Clone Name:	OTI6C3
Applications:	FC, IHC, WB
Recommended Dilution:	IHC 1:150
Reactivity:	Human
Host:	Mouse
Isotype:	IgG1
Clonality:	Monoclonal
Immunogen:	Full length human recombinant protein of human PDCD1LG2 (NP_079515) produced in HEK293T cell.
Formulation:	PBS (pH 7.3) containing 1% BSA, 50% glycerol and 0.02% sodium azide.
Concentration:	0.5 mg/ml
Purification:	Purified from mouse ascites fluids or tissue culture supernatant by affinity chromatography (protein A/G)
Conjugation:	Biotin
Storage:	Store at -20°C as received.
Stability:	Stable for 12 months from date of receipt.
Predicted Protein Size:	30.8 kDa
Gene Name:	programmed cell death 1 ligand 2
Database Link:	<a href="#">NP_079515</a> <a href="#">Entrez Gene 80380 Human</a> <a href="#">Q9BQ51</a>
Background:	Involved in the costimulatory signal, essential for T-cell proliferation and IFNG production in a PDCD1-independent manner. Interaction with PDCD1 inhibits T-cell proliferation by blocking cell cycle progression and cytokine production. [UniProtKB/Swiss-Prot Function]
Synonyms:	B7DC; bA574F11.2; Btdc; CD273; PD-L2; PDCD1L2; PDL2
Protein Families:	Transmembrane



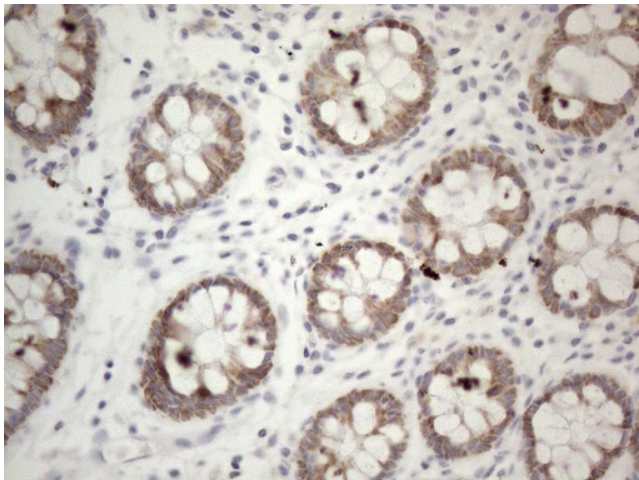
[View online »](#)

Protein Pathways: Cell adhesion molecules (CAMs)

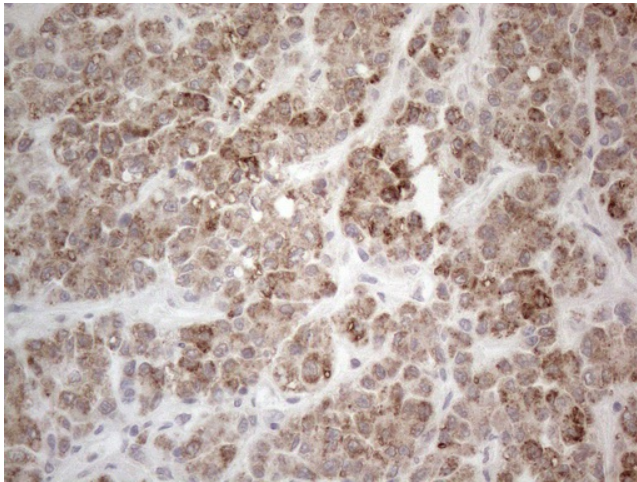
**Product images:**



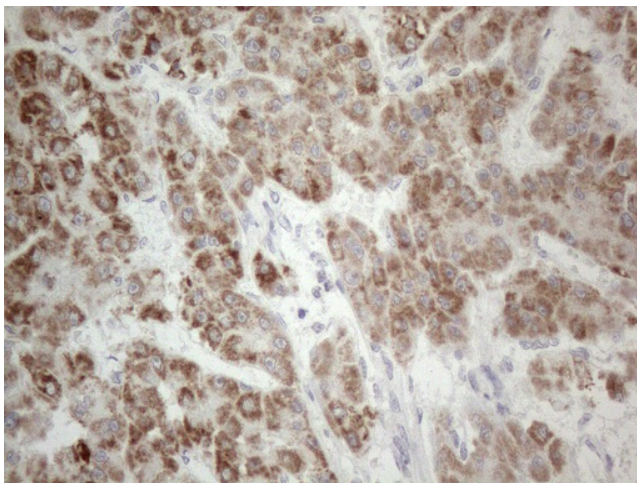
HEK293T cells were transfected with the pCMV6-ENTRY control (Left lane) or pCMV6-ENTRY PDL2 ([RC224141], Right lane) cDNA for 48 hrs and lysed. Equivalent amounts of cell lysates (5 ug per lane) were separated by SDS-PAGE and immunoblotted with anti-PDL2 (1:1k)



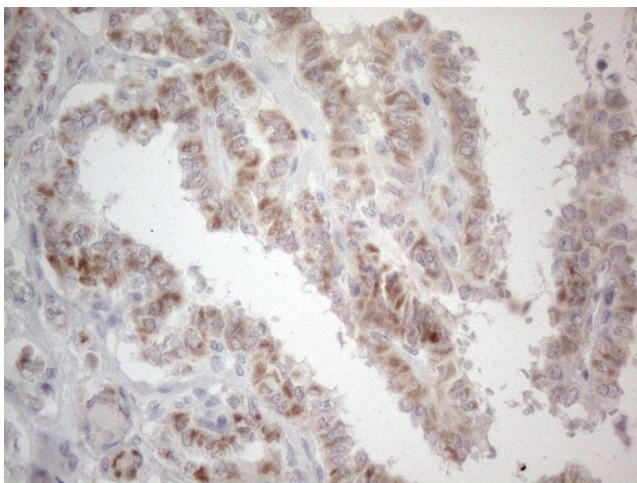
Immunohistochemical staining of paraffin-embedded Human colon tissue within the normal limits using anti-PDCD1LG2 mouse monoclonal antibody. (Heat-induced epitope retrieval by 1mM EDTA in 10mM Tris buffer (pH8.5) at 120°C for 3min, [TA808983]) (1:150)



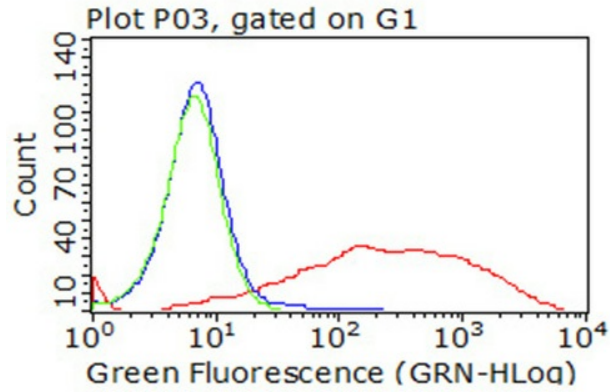
Immunohistochemical staining of paraffin-embedded Human liver tissue within the normal limits using anti-PDCD1LG2 mouse monoclonal antibody. (Heat-induced epitope retrieval by 1mM EDTA in 10mM Tris buffer (pH8.5) at 120°C for 3min, [TA808983]) (1:150)



Immunohistochemical staining of paraffin-embedded Carcinoma of Human liver tissue using anti-PDCD1LG2 mouse monoclonal antibody. (Heat-induced epitope retrieval by 1mM EDTA in 10mM Tris buffer (pH8.5) at 120°C for 3min, [TA808983]) (1:150)



Immunohistochemical staining of paraffin-embedded Carcinoma of Human thyroid tissue using anti-PDCD1LG2 mouse monoclonal antibody. (Heat-induced epitope retrieval by 1mM EDTA in 10mM Tris buffer (pH8.5) at 120°C for 3min, [TA808983]) (1:150)



Flow cytometric analysis of living 293T cells transfected with PDL2 overexpression plasmid ([RC224141], Red)/empty vector ([PS100001], Blue) using anti-PDL2 antibody ([TA808983]). Cells incubated with a non-specific antibody (Green) were used as isotype control (1:100).