

## Product datasheet for **TA808963S**

### **COPS3 Mouse Monoclonal Antibody [Clone ID: OTI3E1]**

#### **Product data:**

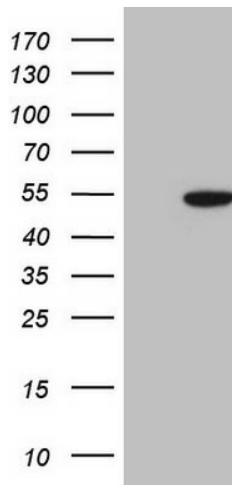
Product Type:	Primary Antibodies
Clone Name:	OTI3E1
Applications:	WB
Recommended Dilution:	WB 1:2000
Reactivity:	Human, Mouse, Rat
Host:	Mouse
Isotype:	IgG2b
Clonality:	Monoclonal
Immunogen:	Human recombinant protein fragment corresponding to amino acids 224-423 of human COPS3(NP_003644) produced in E.coli.
Formulation:	PBS (pH 7.3) containing 1% BSA, 50% glycerol and 0.02% sodium azide.
Concentration:	1 mg/ml
Purification:	Purified from mouse ascites fluids or tissue culture supernatant by affinity chromatography (protein A/G)
Conjugation:	Unconjugated
Storage:	Store at -20°C as received.
Stability:	Stable for 12 months from date of receipt.
Gene Name:	COP9 signalosome subunit 3
Database Link:	<a href="#">NP_003644</a> <a href="#">Entrez Gene 26572 Mouse</a> <a href="#">Entrez Gene 287367 Rat</a> <a href="#">Entrez Gene 8533 Human</a> <a href="#">Q9UNS2</a>
Background:	The protein encoded by this gene possesses kinase activity that phosphorylates regulators involved in signal transduction. It phosphorylates I kappa-Balpha, p105, and c-Jun. It acts as a docking site for complex-mediated phosphorylation. The gene is located within the Smith-Magenis syndrome region on chromosome 17. Two transcript variants encoding different isoforms have been found for this gene. [provided by RefSeq, Nov 2010]
Synonyms:	CSN3; SGN3



[View online »](#)

Protein Families: Stem cell - Pluripotency

**Product images:**



HEK293T cells were transfected with the pCMV6-ENTRY control (Cat# [PS100001], Left lane) or pCMV6-ENTRY COPS3 (Cat# [RC200486], Right lane) cDNA for 48 hrs and lysed. Equivalent amounts of cell lysates (5 ug per lane) were separated by SDS-PAGE and immunoblotted with anti-COPS3 (Cat# [TA808963])(1:2000). Positive lysates [LY418520] (100ug) and [LC418520] (20ug) can be purchased separately from OriGene.