

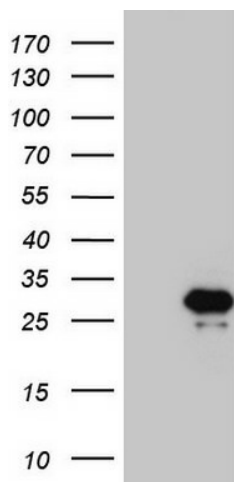
## Product datasheet for TA808959M

### C7orf16 (PPP1R17) Mouse Monoclonal Antibody [Clone ID: OTI2A8]

#### Product data:

Product Type:	Primary Antibodies
Clone Name:	OTI2A8
Applications:	WB
Recommended Dilution:	WB 1:2000
Reactivity:	Human
Host:	Mouse
Isotype:	IgG1
Clonality:	Monoclonal
Immunogen:	Full length human recombinant protein of human C7ORF16 (NP_006649) produced in E.coli.
Formulation:	PBS (pH 7.3) containing 1% BSA, 50% glycerol and 0.02% sodium azide.
Concentration:	1 mg/ml
Purification:	Purified from mouse ascites fluids or tissue culture supernatant by affinity chromatography (protein A/G)
Conjugation:	Unconjugated
Storage:	Store at -20°C as received.
Stability:	Stable for 12 months from date of receipt.
Gene Name:	protein phosphatase 1 regulatory subunit 17
Database Link:	<a href="#">NP_006649</a> <a href="#">Entrez Gene 10842 Human</a> <a href="#">O96001</a>
Background:	The protein encoded by this gene is found primarily in cerebellar Purkinje cells, where it functions as a protein phosphatase inhibitor. The encoded protein is a substrate for cGMP-dependent protein kinase. An allele of this gene was discovered that increases susceptibility to hypercholesterolemia. Two transcript variants encoding different isoforms have been found for this gene. [provided by RefSeq, Jul 2010]
Synonyms:	C7orf16; GSBS
Protein Pathways:	Long-term depression


[View online »](#)

**Product images:**


HEK293T cells were transfected with the pCMV6-ENTRY control (Cat# [PS100001], Left lane) or pCMV6-ENTRY C7ORF16 (Cat# [RC207007], Right lane) cDNA for 48 hrs and lysed. Equivalent amounts of cell lysates (5 ug per lane) were separated by SDS-PAGE and immunoblotted with anti-C7ORF16 (Cat# [TA808959])(1:2000). Positive lysates [LY416501] (100ug) and [LC416501] (20ug) can be purchased separately from OriGene.