

## Product datasheet for TA808946

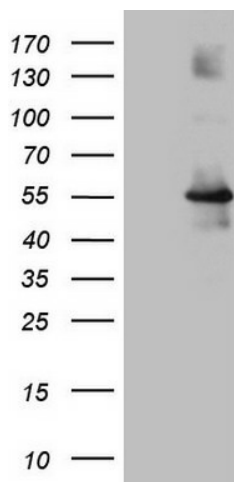
### OSGIN2 Mouse Monoclonal Antibody [Clone ID: OT15F6]

#### Product data:

Product Type:	Primary Antibodies
Clone Name:	OT15F6
Applications:	WB
Recommend Dilution:	WB 1:2000
Reactivity:	Human
Host:	Mouse
Isotype:	IgG2a
Clonality:	Monoclonal
Immunogen:	Human recombinant protein fragment corresponding to amino acids 1-250 of human OSGIN2(NP_004328) produced in E.coli.
Formulation:	PBS (PH 7.3) containing 1% BSA, 50% glycerol and 0.02% sodium azide.
Concentration:	1 mg/ml
Purification:	Purified from mouse ascites fluids by affinity chromatography
Predicted Protein Size:	56.5 kDa
Gene Name:	oxidative stress induced growth inhibitor family member 2
Database Link:	<a href="#">NP_004328 Entrez Gene 734 Human</a>
Background:	May be involved in meiosis or the maturation of germ cells. [UniProtKB/Swiss-Prot Function]
Synonyms:	C8orf1; hT41



[View online »](#)

**Product images:**

HEK293T cells were transfected with the pCMV6-ENTRY control (Left lane) or pCMV6-ENTRY OSGIN2 (RC223771, Right lane) cDNA for 48 hrs and lysed. Equivalent amounts of cell lysates (5 ug per lane) were separated by SDS-PAGE and immunoblotted with anti-OSGIN2 (1:2000). Positive lysates LY418053 (100ug) and LC418053 (20ug) can be purchased separately from OriGene.