

## Product datasheet for **TA808945S**

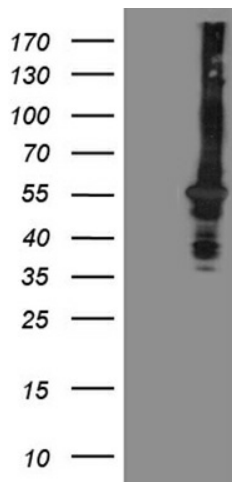
### OSGIN2 Mouse Monoclonal Antibody [Clone ID: OTI6E10]

#### Product data:

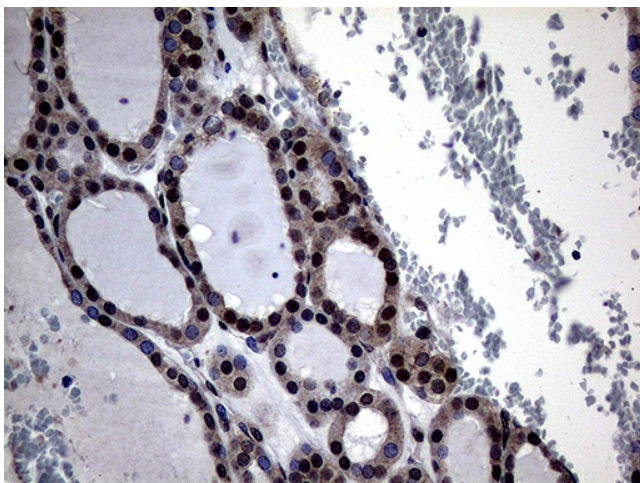
|                         |  |
|-------------------------|--|
| Product Type:           | Primary Antibodies   |
| Clone Name:             | OTI6E10  |
| Applications:           | IHC, WB  |
| Recommended Dilution:   | WB 1:2000, IHC 1:2000  |
| Reactivity:             | Human, Mouse, Rat  |
| Host:                   | Mouse  |
| Isotype:                | IgG2b  |
| Clonality:              | Monoclonal   |
| Immunogen:              | Human recombinant protein fragment corresponding to amino acids 1-250 of human OSGIN2(NP_004328) produced in E.coli.   |
| Formulation:            | PBS (pH 7.3) containing 1% BSA, 50% glycerol and 0.02% sodium azide.   |
| Concentration:          | 1 mg/ml  |
| Purification:           | Purified from mouse ascites fluids or tissue culture supernatant by affinity chromatography (protein A/G)  |
| Conjugation:            | Unconjugated   |
| Storage:                | Store at -20°C as received.  |
| Stability:              | Stable for 12 months from date of receipt.   |
| Predicted Protein Size: | 56.5 kDa   |
| Gene Name:              | oxidative stress induced growth inhibitor family member 2  |
| Database Link:          | <a href="#">NP_004328</a><br><a href="#">Entrez Gene 209212 Mouse</a> <a href="#">Entrez Gene 313085 Rat</a> <a href="#">Entrez Gene 734 Human</a><br><a href="#">Q9Y236</a> |
| Background:             | May be involved in meiosis or the maturation of germ cells. [UniProtKB/Swiss-Prot Function]  |
| Synonyms:               | C8orf1; hT41   |



[View online »](#)

**Product images:**

HEK293T cells were transfected with the pCMV6-ENTRY control (Left lane) or pCMV6-ENTRY OSGIN2 ([RC223771], Right lane) cDNA for 48 hrs and lysed. Equivalent amounts of cell lysates (5 ug per lane) were separated by SDS-PAGE and immunoblotted with anti-OSGIN2 (1:2000). Positive lysates [LY418053] (100ug) and [LC418053] (20ug) can be purchased separately from OriGene.



Immunohistochemical staining of paraffin-embedded Human thyroid tissue within the normal limits using anti-OSGIN2 mouse monoclonal antibody. (Heat-induced epitope retrieval by 1mM EDTA in 10mM Tris buffer (pH8.5) at 120°C for 3min, [TA808945]) (1:2000)