

## Product datasheet for **TA808926AM**

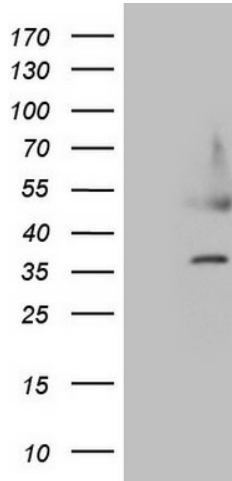
### HDGF Mouse Monoclonal Antibody (Biotin conjugated) [Clone ID: OTI8C7]

#### Product data:

Product Type:	Primary Antibodies
Clone Name:	OTI8C7
Applications:	WB
Recommended Dilution:	WB 1:500
Reactivity:	Human, Mouse, Rat
Host:	Mouse
Isotype:	IgG1
Clonality:	Monoclonal
Immunogen:	Full length human recombinant protein of human HDGF(NP_004485) produced in E.coli.
Formulation:	PBS (pH 7.3) containing 1% BSA, 50% glycerol and 0.02% sodium azide.
Concentration:	0.5 mg/ml
Purification:	Purified from mouse ascites fluids or tissue culture supernatant by affinity chromatography (protein A/G)
Conjugation:	Biotin
Storage:	Store at -20°C as received.
Stability:	Stable for 12 months from date of receipt.
Gene Name:	hepatoma-derived growth factor
Database Link:	<a href="#">NP_004485</a> <a href="#">Entrez Gene 15191 Mouse</a> <a href="#">Entrez Gene 114499 Rat</a> <a href="#">Entrez Gene 3068 Human</a> <a href="#">P51858</a>
Background:	This gene encodes a member of the hepatoma-derived growth factor family. The encoded protein has mitogenic and DNA-binding activity and may play a role in cellular proliferation and differentiation. This gene was thought initially to be located on chromosome X, however, that location has been determined to correspond to a related pseudogene. Alternatively spliced transcript variants encoding distinct isoforms have been described. [provided by RefSeq, Jul 2008]
Synonyms:	HMG1L2



[View online »](#)

**Product images:**

HEK293T cells were transfected with the pCMV6-ENTRY control (Cat# [PS100001], Left lane) or pCMV6-ENTRY HDGF (Cat# [RC204148], Right lane) cDNA for 48 hrs and lysed. Equivalent amounts of cell lysates (5 ug per lane) were separated by SDS-PAGE and immunoblotted with anti-HDGF (Cat# [TA808926])(1:500). Positive lysates [LY417948] (100ug) and [LC417948] (20ug) can be purchased separately from OriGene.