

Product datasheet for **TA808920BM**

Bcl G (BCL2L14) Mouse Monoclonal Antibody (HRP conjugated) [Clone ID: OTI2E12]

Product data:

Product Type:	Primary Antibodies
Clone Name:	OTI2E12
Applications:	WB
Recommended Dilution:	WB 1:2000
Reactivity:	Human
Host:	Mouse
Isotype:	IgG1
Clonality:	Monoclonal
Immunogen:	Human recombinant protein fragment corresponding to amino acids 116-216 of human BCL2L14 (NP_620048) produced in E.coli.
Formulation:	PBS (pH 7.3) containing 1% BSA, 50% glycerol.
Concentration:	0.5 mg/ml
Purification:	Purified from mouse ascites fluids or tissue culture supernatant by affinity chromatography (protein A/G)
Conjugation:	HRP
Storage:	Store at -20°C as received.
Stability:	Stable for 12 months from date of receipt.
Predicted Protein Size:	36.4 kDa
Gene Name:	BCL2 like 14
Database Link:	NP_620048 Entrez Gene 79370 Human Q9BZR8
Background:	The protein encoded by this gene belongs to the BCL2 protein family. BCL2 family members form hetero- or homodimers and act as anti- or pro-apoptotic regulators that are involved in a wide variety of cellular activities. Overexpression of this gene has been shown to induce apoptosis in cells. Three alternatively spliced transcript variants encoding two distinct isoforms have been reported for this gene. [provided by RefSeq, May 2009]

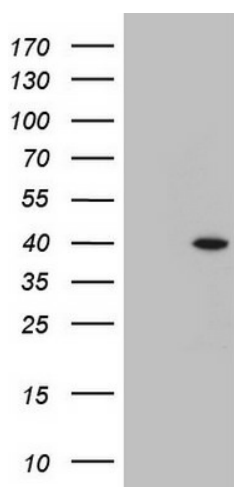


[View online »](#)

Synonyms: BCLG

Protein Families: Druggable Genome

Product images:



HEK293T cells were transfected with the pCMV6-ENTRY control (Left lane) or pCMV6-ENTRY BCL2L14 ([RC206404], Right lane) cDNA for 48 hrs and lysed. Equivalent amounts of cell lysates (5 ug per lane) were separated by SDS-PAGE and immunoblotted with anti-BCL2L14 (1:2000). Positive lysates [LY408531] (100ug) and [LC408531] (20ug) can be purchased separately from OriGene.