

Product datasheet for **TA808901S**

SAMSN1 Mouse Monoclonal Antibody [Clone ID: OTI7C12]

Product data:

Product Type:	Primary Antibodies
Clone Name:	OTI7C12
Applications:	WB
Recommended Dilution:	WB 1:2000
Reactivity:	Human
Host:	Mouse
Isotype:	IgG1
Clonality:	Monoclonal
Immunogen:	Human recombinant protein fragment corresponding to amino acids 1-250 of human SAMSN1(NP_071419) produced in E.coli.
Formulation:	PBS (pH 7.3) containing 1% BSA, 50% glycerol and 0.02% sodium azide.
Concentration:	1 mg/ml
Purification:	Purified from mouse ascites fluids or tissue culture supernatant by affinity chromatography (protein A/G)
Conjugation:	Unconjugated
Storage:	Store at -20°C as received.
Stability:	Stable for 12 months from date of receipt.
Predicted Protein Size:	41.5 kDa
Gene Name:	SAM domain, SH3 domain and nuclear localization signals 1
Database Link:	NP_071419 Entrez Gene 64092 Human Q9NSI8



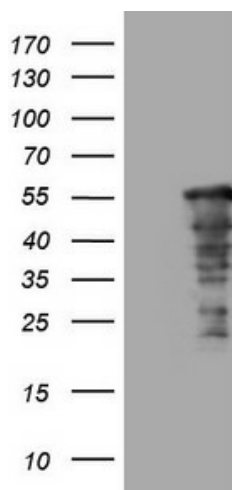
[View online »](#)

Background:

SAMSN1 is a member of a novel gene family of putative adaptors and scaffold proteins containing SH3 and SAM (sterile alpha motif) domains (Claudio et al., 2001 [PubMed 11536050]). [supplied by OMIM, Mar 2008]. Transcript Variant: This variant (2) contains alternate exons at the 5' end and initiates translation from an alternate start codon compared to variant 1. The resulting longer isoform (2) has a distinct N-terminus compared to isoform 1. Sequence Note: This RefSeq record was created from transcript and genomic sequence data to make the sequence consistent with the reference genome assembly. The genomic coordinates used for the transcript record were based on transcript alignments. ##Evidence-Data-START## Transcript exon combination :: AF218085.2 [ECO:0000332] RNAseq introns :: mixed/partial sample support ERS025081, ERS025082 [ECO:0000350] ##Evidence-Data-END## COMPLETENESS: complete on the 3' end.

Synonyms:

HACS1; NASH1; SASH2; SH3D6B; SLy2

Product images:

HEK293T cells were transfected with the pCMV6-ENTRY control (Left lane) or pCMV6-ENTRY SAMSN1 ([RC203721], Right lane) cDNA for 48 hrs and lysed. Equivalent amounts of cell lysates (5 ug per lane) were separated by SDS-PAGE and immunoblotted with anti-SAMSN1 (1:2000). Positive lysates [LY402912] (100ug) and [LC402912] (20ug) can be purchased separately from OriGene.