

## Product datasheet for **TA808893M**

### PTK9 (TWF1) Mouse Monoclonal Antibody [Clone ID: OTI1C2]

#### Product data:

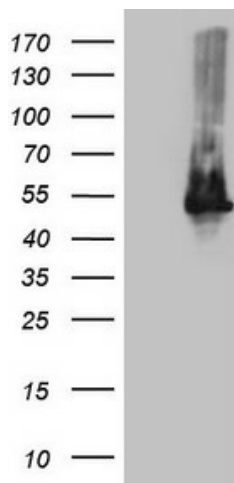
Product Type:	Primary Antibodies
Clone Name:	OTI1C2
Applications:	WB
Recommended Dilution:	WB 1:2000
Reactivity:	Human, Mouse, Rat
Host:	Mouse
Isotype:	IgG2b
Clonality:	Monoclonal
Immunogen:	Human recombinant protein fragment corresponding to amino acids 140-384 of human TWF1(NP_002813) produced in E.coli.
Formulation:	PBS (pH 7.3) containing 1% BSA, 50% glycerol and 0.02% sodium azide.
Concentration:	1 mg/ml
Purification:	Purified from mouse ascites fluids or tissue culture supernatant by affinity chromatography (protein A/G)
Conjugation:	Unconjugated
Storage:	Store at -20°C as received.
Stability:	Stable for 12 months from date of receipt.
Predicted Protein Size:	43.7 kDa
Gene Name:	twinfilin actin binding protein 1
Database Link:	<a href="#">NP_002813</a> <a href="#">Entrez Gene 19230 Mouse</a> <a href="#">Entrez Gene 315265 Rat</a> <a href="#">Entrez Gene 5756 Human</a> <a href="#">Q12792</a>
Background:	This gene encodes twinfilin, an actin monomer-binding protein conserved from yeast to mammals. Studies of the mouse counterpart suggest that this protein may be an actin monomer-binding protein, and its localization to cortical G-actin-rich structures may be regulated by the small GTPase RAC1. [provided by RefSeq, Jul 2008]
Synonyms:	A6; PTK9



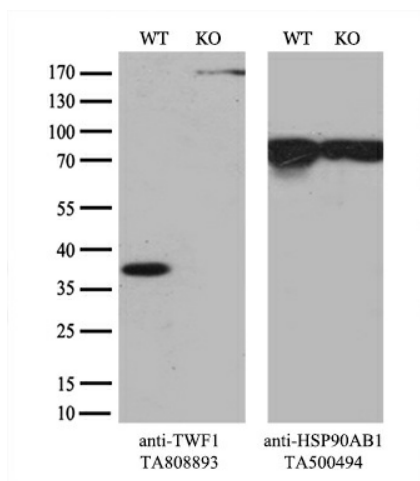
[View online »](#)

**Protein Families:** Druggable Genome, Protein Kinase

## Product images:



HEK293T cells were transfected with the pCMV6-ENTRY control (Left lane) or pCMV6-ENTRY TWF1 ([RC207215], Right lane) cDNA for 48 hrs and lysed. Equivalent amounts of cell lysates (5 ug per lane) were separated by SDS-PAGE and immunoblotted with anti-TWF1 (1:2000). Positive lysates [LY401004] (100ug) and [LC401004] (20ug) can be purchased separately from OriGene.



Equivalent amounts of cell lysates (10 ug per lane) of wild-type HeLa cells (WT, Cat# LC810HELA) and TWF1-Knockout HeLa cells (KO, Cat# [LC832145]) were separated by SDS-PAGE and immunoblotted with anti-TWF1 monoclonal antibody [TA808893] (1:2000). Then the blotted membrane was stripped and reprobed with anti-HSP90 antibody as a loading control.