

Product datasheet for **TA808873S**

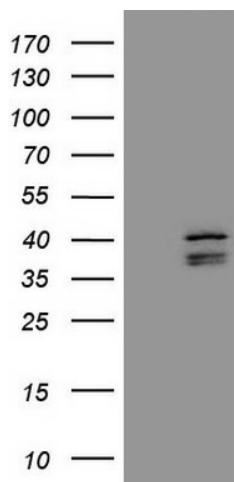
EBLN2 Mouse Monoclonal Antibody [Clone ID: OTI1A2]

Product data:

Product Type:	Primary Antibodies
Clone Name:	OTI1A2
Applications:	WB
Recommended Dilution:	WB 1:500
Reactivity:	Human
Host:	Mouse
Isotype:	IgG1
Clonality:	Monoclonal
Immunogen:	Full length human recombinant protein of human EBLN2(NP_060499) produced in E.coli.
Formulation:	PBS (pH 7.3) containing 1% BSA, 50% glycerol and 0.02% sodium azide.
Concentration:	1 mg/ml
Purification:	Purified from mouse ascites fluids or tissue culture supernatant by affinity chromatography (protein A/G)
Conjugation:	Unconjugated
Storage:	Store at -20°C as received.
Stability:	Stable for 12 months from date of receipt.
Predicted Protein Size:	30.3 kDa
Gene Name:	endogenous Bornavirus-like nucleoprotein 2
Database Link:	NP_060499 Entrez Gene 55096 Human Q6P2I7
Background:	May act as an RNA-binding protein. The C-terminal region is highly homologous to the bornavirus nucleocapsid N protein that binds viral RNA and oligomerizes. The viral protein also possesses a nuclear import and a nuclear export signal. These 2 signals seem absent in EBLN-2 supporting an unrelated function in Human. [UniProtKB/Swiss-Prot Function]
Synonyms:	EBLN-2



[View online »](#)

Product images:

HEK293T cells were transfected with the pCMV6-ENTRY control (Cat# [PS100001], Left lane) or pCMV6-ENTRY EBLN2 (Cat# [RC208579], Right lane) cDNA for 48 hrs and lysed. Equivalent amounts of cell lysates (5 ug per lane) were separated by SDS-PAGE and immunoblotted with anti-EBLN2 (Cat# [TA808873])(1:500). Positive lysates [LY413369] (100ug) and [LC413369] (20ug) can be purchased separately from OriGene.