

## Product datasheet for **TA808863M**

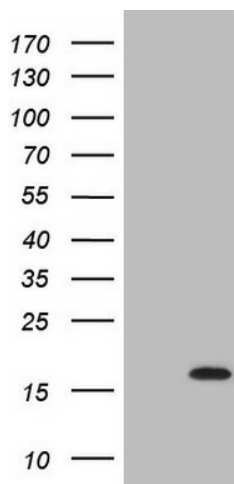
### **C17orf58 Mouse Monoclonal Antibody [Clone ID: OTI6E9]**

#### **Product data:**

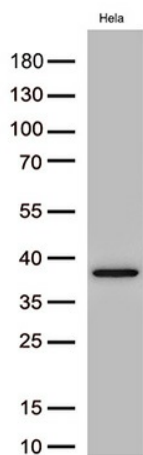
Product Type:	Primary Antibodies
Clone Name:	OTI6E9
Applications:	WB
Recommended Dilution:	WB 1:2000
Reactivity:	Human, Mouse, Rat
Host:	Mouse
Isotype:	IgG2b
Clonality:	Monoclonal
Immunogen:	Full length human recombinant protein of human C17orf58(NP_858041) produced in E.coli.
Formulation:	PBS (pH 7.3) containing 1% BSA, 50% glycerol and 0.02% sodium azide.
Concentration:	1 mg/ml
Purification:	Purified from mouse ascites fluids or tissue culture supernatant by affinity chromatography (protein A/G)
Conjugation:	Unconjugated
Storage:	Store at -20°C as received.
Stability:	Stable for 12 months from date of receipt.
Predicted Protein Size:	11 kDa
Gene Name:	chromosome 17 open reading frame 58
Database Link:	<a href="#">NP_858041</a> <a href="#">Entrez Gene 284018 Human</a> <a href="#">Q2M2W7</a>
Synonyms:	MGC138278


[View online »](#)

## Product images:



HEK293T cells were transfected with the pCMV6-ENTRY control (Cat# [PS100001], Left lane) or pCMV6-ENTRY C17orf58 (Cat# [RC207861], Right lane) cDNA for 48 hrs and lysed. Equivalent amounts of cell lysates (5 ug per lane) were separated by SDS-PAGE and immunoblotted with anti-C17orf58 (Cat# [TA808863])(1:2000). Positive lysates [LY405743] (100ug) and [LC405743] (20ug) can be purchased separately from OriGene.



Western blot analysis of extracts (30ug per lane) from HeLa cell lines lysates by using anti-C17orf58 monoclonal antibody ([TA808863], 1:2000).