

Product datasheet for **TA808861**

PTK9 (TWF1) Mouse Monoclonal Antibody [Clone ID: OTI6C11]

Product data:

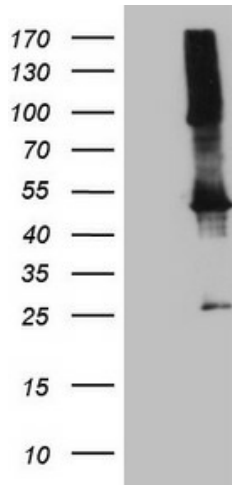
| | |
|-------------------------|---|
| Product Type: | Primary Antibodies |
| Clone Name: | OTI6C11 |
| Applications: | WB |
| Recommended Dilution: | WB 1:2000 |
| Reactivity: | Human, Mouse, Rat |
| Host: | Mouse |
| Isotype: | IgG1 |
| Clonality: | Monoclonal |
| Immunogen: | Human recombinant protein fragment corresponding to amino acids 140-384 of human TWF1(NP_002813) produced in E.coli. |
| Formulation: | PBS (pH 7.3) containing 1% BSA, 50% glycerol and 0.02% sodium azide. |
| Concentration: | 1 mg/ml |
| Purification: | Purified from mouse ascites fluids or tissue culture supernatant by affinity chromatography (protein A/G) |
| Conjugation: | Unconjugated |
| Storage: | Store at -20°C as received. |
| Stability: | Stable for 12 months from date of receipt. |
| Predicted Protein Size: | 43.7 kDa |
| Gene Name: | twinfilin actin binding protein 1 |
| Database Link: | NP_002813 Entrez Gene 19230 Mouse Entrez Gene 315265 Rat Entrez Gene 5756 Human Q12792 |
| Background: | This gene encodes twinfilin, an actin monomer-binding protein conserved from yeast to mammals. Studies of the mouse counterpart suggest that this protein may be an actin monomer-binding protein, and its localization to cortical G-actin-rich structures may be regulated by the small GTPase RAC1. [provided by RefSeq, Jul 2008] |
| Synonyms: | A6; PTK9 |



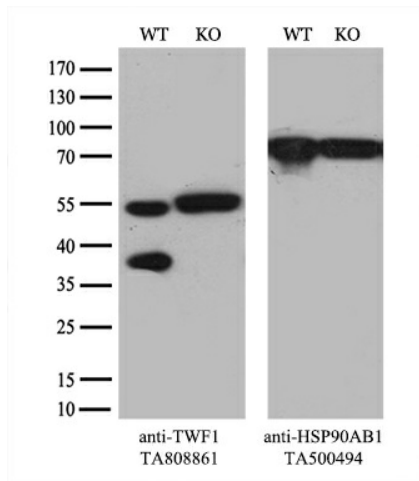
[View online »](#)

Protein Families: Druggable Genome, Protein Kinase

Product images:



HEK293T cells were transfected with the pCMV6-ENTRY control (Left lane) or pCMV6-ENTRY TWF1 ([RC207215], Right lane) cDNA for 48 hrs and lysed. Equivalent amounts of cell lysates (5 ug per lane) were separated by SDS-PAGE and immunoblotted with anti-TWF1 (1:2000). Positive lysates [LY401004] (100ug) and [LC401004] (20ug) can be purchased separately from OriGene.



Equivalent amounts of cell lysates (10 ug per lane) of wild-type HeLa cells (WT, Cat# LC810HELA) and TWF1-Knockout HeLa cells (KO, Cat# [LC832145]) were separated by SDS-PAGE and immunoblotted with anti-TWF1 monoclonal antibody TA808861 (1:2000). Then the blotted membrane was stripped and reprobed with anti-HSP90 antibody as a loading control.