

Product datasheet for **TA808856**

NGDN Mouse Monoclonal Antibody [Clone ID: OTI8B5]

Product data:

Product Type:	Primary Antibodies
Clone Name:	OTI8B5
Applications:	WB
Recommended Dilution:	WB 1:2000
Reactivity:	Human, Mouse, Rat
Host:	Mouse
Isotype:	IgG1
Clonality:	Monoclonal
Immunogen:	Full length human recombinant protein of human NGDN (NP_001036100) produced in E.coli.
Formulation:	PBS (pH 7.3) containing 1% BSA, 50% glycerol and 0.02% sodium azide.
Concentration:	1 mg/ml
Purification:	Purified from mouse ascites fluids or tissue culture supernatant by affinity chromatography (protein A/G)
Conjugation:	Unconjugated
Storage:	Store at -20°C as received.
Stability:	Stable for 12 months from date of receipt.
Predicted Protein Size:	35.7 kDa
Gene Name:	neuroguidin
Database Link:	NP_001036100 Entrez Gene 25983 Human Q8NEJ9

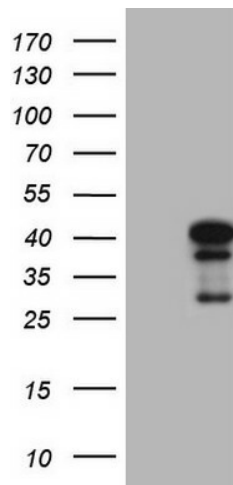
[View online »](#)

Background:

Neuroguidin is an EIF4E (MIM 133440)-binding protein that interacts with CPEB (MIM 607342) and functions as a translational regulatory protein during development of the vertebrate nervous system (Jung et al., 2006 [PubMed 16705177]). [supplied by OMIM, Mar 2008]. Transcript Variant: This variant (2) retains an intron, differing in the 3' UTR and coding sequence compared to variant 1. The resulting isoform (2) has a shorter and distinct C-terminus compared to isoform 1. ##Evidence-Data-START## Transcript exon combination :: AL050003.1 [ECO:0000332] RNAseq introns :: single sample supports all introns ERS025081, ERS025082 [ECO:0000348] ##Evidence-Data-END## COMPLETENESS: complete on the 3' end.

Synonyms:

C14orf120; CANu1; LCP5; lpd-2; NGD

Product images:


HEK293T cells were transfected with the pCMV6-ENTRY control (Left lane) or pCMV6-ENTRY NGDN ([RC204792], Right lane) cDNA for 48 hrs and lysed. Equivalent amounts of cell lysates (5 ug per lane) were separated by SDS-PAGE and immunoblotted with anti-NGDN (1:2000). Positive lysates [LY421013] (100ug) and [LC421013] (20ug) can be purchased separately from OriGene.