

Product datasheet for **TA808847S**

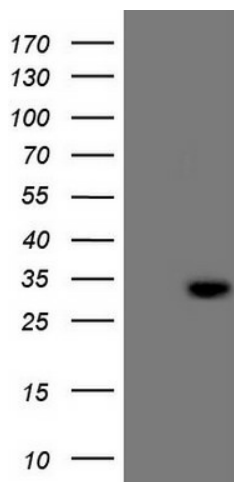
C21orf62 Mouse Monoclonal Antibody [Clone ID: OTI4A6]

Product data:

Product Type:	Primary Antibodies
Clone Name:	OTI4A6
Applications:	WB
Recommended Dilution:	WB 1:2000
Reactivity:	Human
Host:	Mouse
Isotype:	IgG1
Clonality:	Monoclonal
Immunogen:	Full length human recombinant protein of human C21orf62(NP_062542) produced in E.coli.
Formulation:	PBS (pH 7.3) containing 1% BSA, 50% glycerol and 0.02% sodium azide.
Concentration:	1 mg/ml
Purification:	Purified from mouse ascites fluids or tissue culture supernatant by affinity chromatography (protein A/G)
Conjugation:	Unconjugated
Storage:	Store at -20°C as received.
Stability:	Stable for 12 months from date of receipt.
Gene Name:	chromosome 21 open reading frame 62
Database Link:	NP_062542 Entrez Gene 56245 Human Q9NYP8
Synonyms:	B37; C21orf120; PRED81



[View online »](#)

Product images:

HEK293T cells were transfected with the pCMV6-ENTRY control (Left lane) or pCMV6-ENTRY C21orf62 ([RC222481], Right lane) cDNA for 48 hrs and lysed. Equivalent amounts of cell lysates (5 ug per lane) were separated by SDS-PAGE and immunoblotted with anti-C21orf62 (1:2000). Positive lysates [LY412723] (100ug) and [LC412723] (20ug) can be purchased separately from OriGene.