

## Product datasheet for **TA808841S**

### **MAGEB3 Mouse Monoclonal Antibody [Clone ID: OTI7E2]**

#### **Product data:**

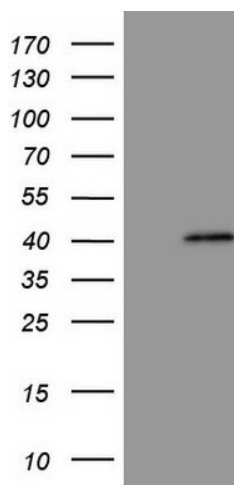
Product Type:	Primary Antibodies
Clone Name:	OTI7E2
Applications:	WB
Recommended Dilution:	WB 1:500
Reactivity:	Human
Host:	Mouse
Isotype:	IgG2b
Clonality:	Monoclonal
Immunogen:	Full length human recombinant protein of human MAGEB3(NP_002356) produced in E.coli.
Formulation:	PBS (pH 7.3) containing 1% BSA, 50% glycerol and 0.02% sodium azide.
Concentration:	1 mg/ml
Purification:	Purified from mouse ascites fluids or tissue culture supernatant by affinity chromatography (protein A/G)
Conjugation:	Unconjugated
Storage:	Store at -20°C as received.
Stability:	Stable for 12 months from date of receipt.
Predicted Protein Size:	39 kDa
Gene Name:	MAGE family member B3
Database Link:	<a href="#">NP_002356</a> <a href="#">Entrez Gene 4114 Human</a> <a href="#">O15480</a>
Background:	This gene is a MAGE-B subfamily member of the MAGE gene family. MAGE family member proteins direct the expression of tumor antigens recognized on a human melanoma by autologous cytolytic T lymphocytes. There are two known clusters of MAGE genes on chromosome X. The members of the MAGE-A subfamily are located in the Xq28 region, while the members of the MAGE-B subfamily are clustered in the Xp21 region. [provided by RefSeq, Jul 2008]



[View online »](#)

Synonyms: CT3.5

### Product images:



HEK293T cells were transfected with the pCMV6-ENTRY control (Left lane) or pCMV6-ENTRY MAGEB3 ([RC210237], Right lane) cDNA for 48 hrs and lysed. Equivalent amounts of cell lysates (5 ug per lane) were separated by SDS-PAGE and immunoblotted with anti-MAGEB3 (1:500). Positive lysates [LY419378] (100ug) and [LC419378] (20ug) can be purchased separately from OriGene.